



# This Week in Mt. Gretna



Celebrating our 18<sup>th</sup> anniversary of service to the Mt. Gretna Community ❖ Friday, August 26, 2016

FINAL EDITION OF THE SEASON

## Friday, August 26

- 9:00am Mt. Gretna Bird Club. Meet at Chautauqua parking lot for 2 hours of bird watching; bring binoculars. 964-3412
- 10-4pm Governor Dick Environmental Center open
- 10:00am Art Classes, with Ellen Nicolas. 7/29 thru Sept. Open to all ages. Bring your own supplies. 269-9413. HC
- 10:30am **Summer Story Forest.** \$5 for children up to age 10, under two free; older children are welcome to come and be our readers! Call 964-3808 or email [governordick@hotmail.com](mailto:governordick@hotmail.com) to register. Final in series. EC/GDE
- 3-5pm Mt. Gretna Art Gallery at Le Sorelle open
- 6:00pm Timbers Summer Musical Revue & Dinner. \$29.75+. Call 964-3601 for reservations.
- 7:30pm **Eton Churchill Memorial Staged Play Reading Series:** New works on the theme of "Food" by the Playwrights Alliance of PA, with Dr. Kevin Pry. Refreshments and talk-back with the author(s) & actors. HP/CIC
- 7:30pm **8-Track: The Sounds of the 70s** in concert. \$39-15. PH/GTH
- 7:30-10:30pm MG Roller Rink open; \$6 per person

## Saturday, August 27

- 9:00am Quoits: in the Campmeeting along Rt. 117; beginners welcome.
- 10-12pm MG Area Historical Society research library open
- 10-4pm Governor Dick Environmental Center open
- 10:00am **Honeybees!** An indoor activity for families, focusing on why pollinators are important to people. We'll learn about the lifecycle of a honeybee and how crowded hives function so efficiently. You'll get to taste honey and make a honeycomb candle to take home. \$5 per person, limited space. Call 964-3808 or email [governordick@hotmail.com](mailto:governordick@hotmail.com) to register. EC/GDE
- 11-5pm The Gallery at La Cigale open
- 11-8pm **Pirates' Return** at the PA Renaissance Faire
- 1-4pm MG Area Historical Society Museum open

## *(Saturday, August 27 - continued)*

- 2:00pm **SEEing Nature: Insects!** Don't be afraid around all those flying, buzzing, creeping, wiggling insects! Take a look at their unique colors and marvel at how different they look from each other. We'll get face to face with some of them! Workbook is \$10 and space is limited. Register by calling 964-3808 or email [governordick@hotmail.com](mailto:governordick@hotmail.com). EC/GDE
- 3-5pm Mt. Gretna Art Gallery at Le Sorelle open
- 5:30pm **Dinner at Le Sorelle**, by advance registration; call 717.269.3876 or email [amy@porchandpantry.com](mailto:amy@porchandpantry.com) reservations by 8/20.
- 7:30pm **8-Track: The Sounds of the 70s** in concert. \$39-15. PH/GTH
- 6:00pm Timbers Summer Musical Revue & Dinner. \$29.75+. Call 964-3601 for reservations.

## Sunday, August 28

- 8:30am Worship. MC/UMC
- 10:00am **Community Worship Service**, with Rev. Darrell Woomey, Retired, UMC and music by Carl Iba, Violin, and the Salem Lutheran Church Choir, led by Mark Dimick. HP/CHP
- 11-5pm The Gallery at La Cigale open
- 11-8pm **Pirates' Return** at the PA Renaissance Faire
- 1-4pm MG Area Historical Society Museum open
- 1-5pm Governor Dick Environmental Center open. EC/GDE
- 1:30pm **Senior Walkabout:** saunter through the summer woods, enjoying the exercise and fresh air, seeing what flowers are in bloom, what butterflies might be around us, and what the birds are doing. This 2-4-mile walk is designed for the 50+. EC/GDE
- 2:00pm **8-Track: The Sounds of the 70s** in concert. Final Performance of the Season. \$39-15. PH/GTH
- 2:00pm **Friends of Ann Hark:** continuing recollections of information about the impact of the Harks on Mt. Gretna and what Gretna meant to them. TB/CMP
- 3-5pm Mt. Gretna Art Gallery at Le Sorelle open

*- more inside -*

Our thanks to the Mt. Gretna Arts Council for compiling and producing the Summer Calendar/directory, from which the bulk of this information is drawn. Advertising and donations underwrite the production costs of the calendar. Tax-deductible donations, of any amount, are most appreciated and can be forwarded to the "Mt. Gretna Arts Council," PO Box 513, Dept. TWIMG, Mt. Gretna, Pennsylvania 17064-0513. Their website is [www.http://artscouncil.mtgretna.com/](http://artscouncil.mtgretna.com/)

"This Week in Mt. Gretna" is produced by Lightkeeper Consulting (507-2667 or [info@lightkeeper.net](mailto:info@lightkeeper.net)), in association with the Mt. Gretna Arts Council and this publication's advertisers; **also available by free subscription via email by request.** Weekly advertising space is available; contact Lightkeeper Consulting.

*The Mt. Gretna Visitor Information Center is open 12-2pm daily (when volunteers are available).*



(Sunday, August 28 - continued)

7:00pm **QuintEssentially Brass:** The quintessential way to close out another memorable season at the Tabernacle. TB/BBF

**Monday, August 29**

10-12pm Mt. Gretna Library open. LB/LIB  
1:00pm Mahjong on the Porch. Game play continues off season. 964-2299. HP/CHP

5:30pm **Mt. Gretna Supper Club**, with entertainment by Nicole Roberts and dinner by Becky Briody, Chef-on-the-Go. \$20. Advance reservations by calling 964-1830 by August 22. HP/CHP

7:00pm **Book Talk:** *Thomas Jefferson and the Tripoli Pirates* by Brian Kilmeade. This is a little known story on how a newly independent nation was challenged by pirates, with Jeff Hurst. LB/LIB

**Tuesday, August 30**

10-12pm Mt. Gretna Library open. LB/LIB  
11-5pm The Gallery at La Cigale open  
6:00pm Timbers Summer Musical Revue & Dinner. \$29.75+. Call 964-3601 for reservations.

**Wednesday, August 31**

11-5pm The Gallery at La Cigale open  
11:30am Luncheon & Timbers Summer Musical Revue. \$24.75+. Call 964-3601 for reservations.  
4:00pm Yoga with Stephanie Bost. \$5. Last session of the season. HP/CHP  
5:30pm Tai Chi, with Charlie Harris. 267-971-3975 \$10/class. HC/HCA  
6:00pm Timbers Summer Musical Revue & Dinner. \$29.75+. Call 964-3601 for reservations.  
7:30pm **Wellness Series: Medical Marijuana**, with Senator Mike Folmer and Christine Taylor Brann, a founding member of *Campaign for Compassion*, mother of a five year old with epilepsy. Final in series. HP/CHP

**Thursday, September 1**

11-5pm The Gallery at La Cigale open  
6:00pm Timbers Summer Musical Revue & Dinner. \$29.75+. Call 964-3601 for reservations.

**Friday, September 2**

9:00am Mt. Gretna Bird Club. Meet at Chautauqua parking lot for 2 hours of bird watching. Bring binoculars. 964-3412.  
10-4pm Governor Dick Environmental Center open  
10:00am Art Classes, with Ellen Nicholas. Bring your own supplies. No Charge. 269-9413. HC/HCA  
11-5pm The Gallery at La Cigale open  
3-5pm Mt. Gretna Art Gallery at Le Sorelle open. CG  
5:00pm **Mt. Gretna First Friday:** Enjoy an evening filled with art, music and dining. Maps for the walk are at the Gallery at La Cigale located on route 117, where you may enjoy the work of guest artists George Reitbauer, Bob Chaundy and music by Liz Fulmer.

5:30pm **First Friday at Art Gallery at LeSorelle.** CG.  
6:00pm Timbers Summer Musical Revue & Dinner. \$29.75+. Call 964-3601 for reservations.  
7:30pm **The Hotels of Mt. Gretna**, with Ron Hontz. HP/HIS  
7:30-10:30pm Mt. Gretna Roller Rink open; \$6 per person

**Saturday, September 3**

9:00am Quoits; Campmeeting along Rt. 117; beginners welcome.  
10-12pm MGA Historical Society Research Library open  
10-4pm Governor Dick Environmental Center open  
11-5pm La Cigale/The Gallery at La Cigale open  
11-8pm **Heroes of the Realm** at the PA Renaissance Faire  
1-4pm MG Area Historical Society open  
1:00pm **"10 Hike:"** this easy walk will identify native and introduced plant species that are edible or have medicinal value. *Please note that picking and gathering plants in Governor Dick Park is prohibited.* 964-3808 or [governordick@hotmail.com](mailto:governordick@hotmail.com) to register. EC/GDE  
3-5pm Mt. Gretna Art Gallery at Le Sorelle open  
6:00pm Timbers Summer Musical Revue & Dinner. \$29.75+. Call 964-3601 for reservations. **CLOSING.**  
7:30pm **Performance: BalletX**, with contemporary ballet. \$25-10. PH/MAG

**Sunday, September 4**

8:30am Worship. MC/UMC  
9:00am **Fitness Hike:** join us for a fast-paced 4-6 miles! EC/GDE  
10:00am Worship. TB/UMC  
10:00am **Worship Service:** Rev. Emily Morgan, Chaplain, Wilson College, Chambersburg, PA, with The Eaken Piano Trio. Final of the season. PH/CHP  
11-8pm **Heroes of the Realm** at the PA Renaissance Faire  
1-4pm MG Area Historical Society open; final of season.  
1-5pm Governor Dick Environmental Center open, with **Music on the Porch** at 1pm; bring your lawn chair and relax to bluegrass and country music. EC/GDE  
3-5pm Mt. Gretna Art Gallery at Le Sorelle open  
5:00pm **End of Summer Picnic:** beverages and paper goods provided. Call 964-1956 for reservations by August 29, leaving your name, number in party, and if you're bringing salad, entrée or dessert to share. HP/CHP  
6:45pm Classical Conversation or First Listen with young local artists. Free. PH/MAG  
7:30pm **Trio Settecento**, featuring the music of Lully, Ariosti, Couperin, Rameau, Marais, and Leclair. \$23/19 in advance, \$26/19 day of concert. PH/MAG

8:00pm **Luminary Lighting and Prayer for Stacey Seldomridge Pennington.** Purchase a luminary ahead of time to be included in this remembrance at the Mt. Gretna Emporium.

**Monday, September 5**

11-8pm **Heroes of the Realm** at the PA Renaissance Faire  
3-5pm Mt. Gretna Art Gallery open. CG

**Program/Activity Location Codes (Two letters):**

BR\*Board Room  
 CG\*Chautauqua grounds  
 CP\*Chautauqua playground  
 EC\*Governor Dick Environmental Ctr.

FH\*Mt. Gretna Fire Hall/parking lot  
 HC\*Heights Community Building  
 HP\*Hall of Philosophy  
 LB\*Mt. Gretna Library  
 LC\*La Cigale

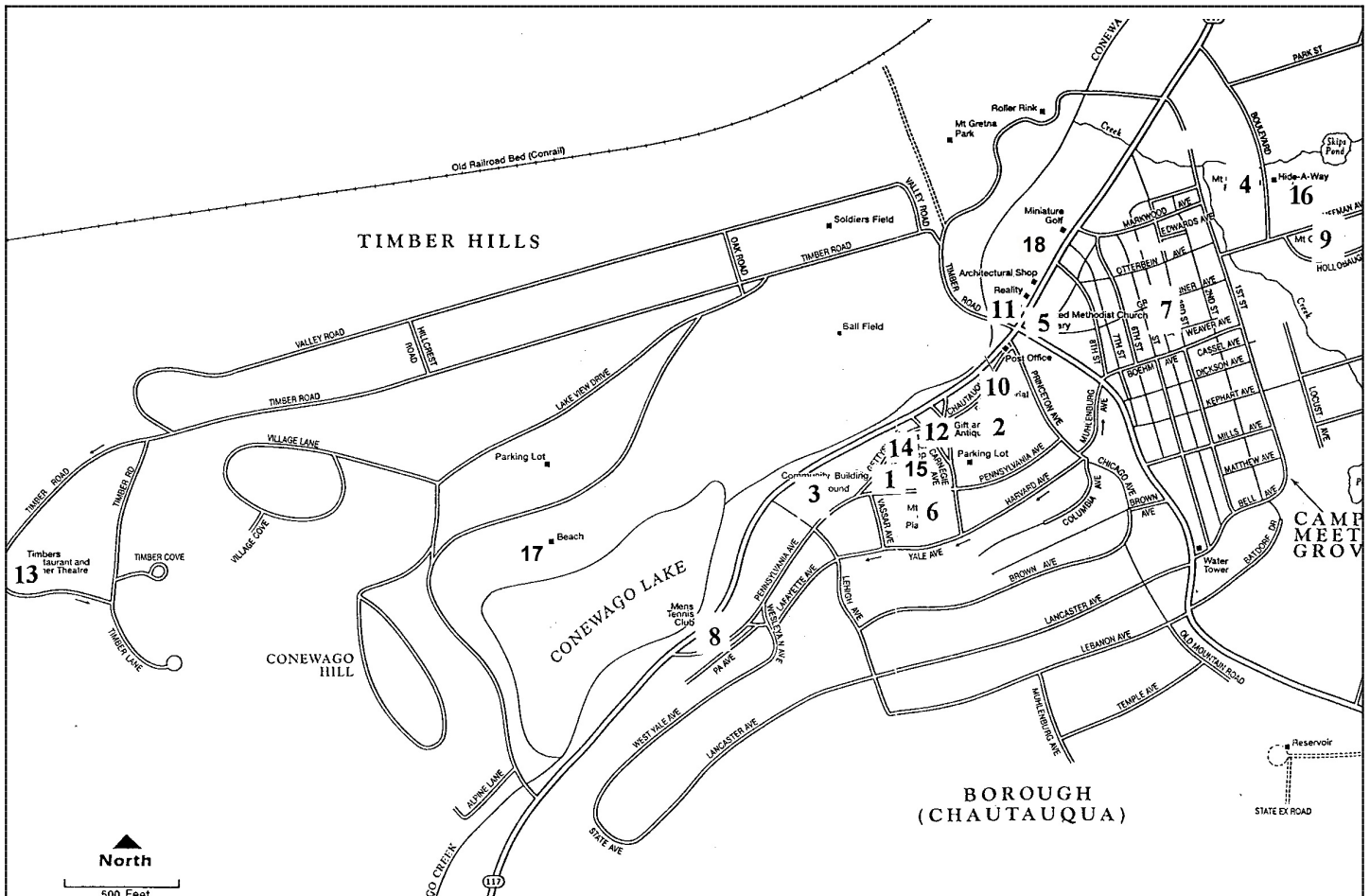
MC\*Methodist Church  
 PH\*Playhouse  
 PL\*Chautauqua parking lot  
 TB\*Campmeeting Tabernacle  
 TC\*Tennis Courts/Tennis Club Grounds

**Sponsoring Organization Codes (Three letters):**

ACN \* Arts Council  
 BBF \* Bible Festival/Summer at the Tabernacle  
 CHA \* Chautauqua Association  
 CHP \* Chautauqua Summer Programs  
 CIC \* Cicada Festival  
 CMP \* Campmeeting Association

GDE \* Governor Dick Environmental Center  
 GLC \* The Gallery at LaCigale  
 GTH \* Gretna Theatre/Productions  
 HCA \* Heights Community Association  
 HIS \* Mt. Gretna Area Historical Society  
 LIB \* Mt. Gretna Community Library

MAG \* Music at Gretna  
 MGA \* Mt. Gretna School of Art  
 OAS \* Outdoor Art Show  
 UMC \* United Methodist Church  
 VFC \* Mt. Gretna Volunteer Fire Comp



**MT. GRETTNA MAP - KEY:**

- |   |   |  |
|---|---|--|
| 1 - Hall of Philosophy                                | 9 - Mt. Gretna Inn; Heights Community Building immediately behind Inn   | 12 - The Gretna Emporium   |
| 2 - Chautauqua grounds                                | 10 - Le Sorelle Porch & Pantry Café, Mt. Gretna Art Gallery (entrance on porch facing park area); Mt. Gretna Realty; M.H. Willeman Drafting & Design; Jonestown Bank & Trust Co. ATM, on Chautauqua Drive | 13 - The Timbers   |
| 3 - Chautauqua playground                             | 11 - Mt. Gretna Pizzeria and Gretna Computer Consulting   | 14 - The Jigger Shop   |
| 4 - Mt. Gretna Fire Hall                              |   | 15 - Mt. Gretna Information Center   |
| 5 - Mt. Gretna Library                                |   | 16 - Mt. Gretna Hide-A-Way   |
| 6 - The Playhouse; Mt. Gretna Area Historical Society |   | 17 - Mt. Gretna Lake & Beach   |
| 7 - The Tabernacle                                    |   | 18 - La Cigale, The Gallery at LaCigale and Mt. Gretna Miniature Golf; behind it, Mt. Gretna Roller Rink |
| 8 - The Tennis Courts                                 |   |  |



## Kathy's Cuisine



### A PERSONAL CHEF SERVICE

Choose from personalized menus, then I'll purchase the groceries & prepare meals in your kitchen by the day/week/month or for intimate entertaining. Scheduled and Private Cooking classes.

[www.kathyscuisine.com](http://www.kathyscuisine.com)

507-2667



**Gretna Computer Consulting**  
Hardware Service & Sales,  
Software Support,  
Web Hosting & Design  
9-5pm \* Rt. 117 \* Mt. Gretna  
**964-1106**

Coupon worth \$1 off at



Mt. Gretna Lake & Beach  
Open 11:30am - 6:30pm daily  
through Labor Day  
964-3130

*This summer's  
new musical:*

"Everything is Rhythm"

Stroll down Musical Lane, in this two act revue with spectacularly arranged music to enjoy.



July 12th - September 3rd  
Tuesday - Saturday evenings  
Evening buffet/show from \$29.75;  
Wednesday/select Saturday matinees  
♫ also serving dinner year 'round ♫

[www.gretnatimbers.com](http://www.gretnatimbers.com)

964 - 3601



*Calendar of Events,  
Summer Premiere,  
Scholarship Program,  
Playhouse Operating Committee,  
and contributions to Mt. Gretna  
Non-Profit Organizations*

*Serving the Arts and  
Community in Mt. Gretna*

*We Live, Love, List & Sell  
Mt. Gretna!*



**Rhoda Long**  
(717) 304-0248



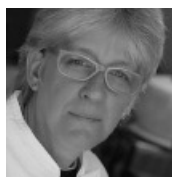
**Emi Snavely**  
(717) 270-1515

Give us a call today!



**Brownstone  
Real Estate Co.**  
(717) 279-6222

## Chef on the Go



From Casual to Elegant Affairs  
Dinner Parties, Receptions,  
Special Occasions by  
Rebecca Briody

964-3541

## Gretna Fat Bikes

See Gretna's beauty from  
the rail trail!



Year 'round bike rentals

629-6932



**FINAL SHOW OF THE  
SEASON**

**August 25-28**

8 Track: Sounds of the 70s

Box Office: 964-3627

[www.gretnatheatre.org](http://www.gretnatheatre.org)

## Mt. Gretna



**HIDE-A-WAY  
Restaurant-Tavern-Deck**

Sunday - Thursday

11:30am-10pm

Friday - Saturday

11:30am - 11pm

675-7987



From Provence to You  
French Provincial Linens and  
More

Summer Hours:

Tuesday - Sunday 11am - 5pm  
Rt. 117, Mt. Gretna

964 - 3313

[www.lacigale-usa.com](http://www.lacigale-usa.com)

# Gretna Emporium



Full of Charm & Character...  
(located next to the Figger Shop)

964-1820

OPEN DAILY 11:30 AM-9:30 PM  
MEMORIAL DAY TO LABOR DAY

**Music at Gretna**  
7:30 pm Mt. Gretna Playhouse

Sept 3  
Ballet X  
Sept 4  
Trio  
Settecento

Sept 11  
Cranados



[GretnaMusic.org](http://GretnaMusic.org) 717-361-1508

# jbt

**Bank on a Smile:**

In Mt. Gretna,  
an ATM is available  
at LeSorelle on  
Chautauqua Drive.

Member FDIC



# LeSorelle

Porch and Pantry RESTAURANT

Summer Hours:

Memorial Day until Labor Day  
Tuesday - Sunday 8am to 1pm

Winter Hours:

Labor Day until Memorial Day  
Friday - Sunday 8am to 1pm

**Saturday Night Dinners**

June 25 - Authentic Italian Dinner  
July 2 & 16, Aug 6 & 27, Sept 11.

Check our website for more info and to  
make reservations for our dinners.  
717-964-3771 | [www.porchandpantry.com](http://www.porchandpantry.com)

To add your event to the schedule or advertise, please contact Kathy Snavely at Lightkeeper Consulting - (717) 507-2667 or [info@lightkeeper.net](mailto:info@lightkeeper.net).