

This Week in Mt. Gretna

Celebrating our 21st year of service to the Mt. Gretna Community ❖ Friday, July 17, 2020
The 128th Season ❖ Visitor Center open Wednesday-Sunday 11:30am-3:30pm

Friday, July 17

- 9am Mt. Gretna Bird Club; meet in the Chautauqua parking lot; no experience needed; bring your binoculars. PL
- 9-5pm **Walk in the Spring**, a Robert Warren Painting Seminar. \$95. More information at <https://www.3summerarts.com/classes/276>
- 10:00am **The Eight Dimensions of Health: Environmental Dimension**, with Janice Balmer. III of VIII. Call 717.964.1830 or email pachautauqua@gmail.com to register and get Zoom link. CHP
- 10-4pm The Governor Dick Environmental Center open (tower and outside restrooms closed). EC/GDE
- 7-10pm Bryan Stevenson performs on the Hideaway Deck
- 7:30-10:30pm Mt. Gretna Roller Rink open. \$8 plus blade/skate rental
- Dusk **Reels on Wheels: Footloose**. \$25 per vehicle. Advance online sales only at <http://www.parenfaire.com/reelsonwheels.html#about>

Saturday, July 18

- 9-5pm **Mountains**, a Robert Warren Painting Seminar. \$95. More information at <https://www.3summerarts.com/classes/275>
- 10am-12pm Mt. Gretna Summer Concerts at the Tabernacle will be selling their mugs, prints and t-shirts, benefiting Save the Children and the Campmeeting Tree Committee, next to Mrs. Hernley's flowers on Rt. 117.
- 10-4pm The Governor Dick Environmental Center open (tower and outside restrooms closed). EC/GDE
- 1-4:30pm MG Roller Rink open. \$6 plus blade/skate rental
- 1:00pm **Nature's Treasure Map**: Bring your own journal and pens, pencils, or paints (we will also have color available to use) to create a treasure map of nature's wonders for others to follow. You'll learn about drawing and observing. No art experience needed! This will be a relaxed stroll on our easy Interpretive Trail suitable for adults and children over age 8. Call 717.964-3808 or email governordick@hotmail.com to register. EC/GDE
- 1:30-4pm Mt. Gretna Roller rink open. \$6 plus blade/skate rental.
- 7:30-10:30pm Mt. Gretna Roller Rink open. See Friday listing.
- Dusk **Reels on Wheels: Footloose**. \$25 per vehicle. Advance online sales only at <http://www.parenfaire.com/reelsonwheels.html#about>

Sunday, July 19

- Worship (recorded) from Mt. Gretna United Methodist Church on their YouTubeChannel, Facebook page, or www.mtgretnachurch.org, available at 6am to be viewed at your convenience
- Worship online with Trinity Lutheran Church of Colebrook www.trinitylutherancolebrook.org or on their Facebook page; for pastoral needs, contact Pastor Cheri at 717.606.8851
- 1-5pm The Governor Dick Environmental Center open (tower and outside restrooms closed). EC/GDE
- 7:30pm **Virtual Concert: Allan Krantz, piano**. 45 minute performance, followed by a live chat. Connect via Gretna Music's Facebook page <https://www.facebook.com/GretnaMusic> or website <http://www.gretnamusic.org>. MAG

Tuesday, July 21

- 10:00am **LVC Book Review**: Donna Jackson Hakazawn's *The Angel and the Assassin: The Tiny Brain Cell that Changes the Course of Medicine*, with Stacy Goodman. Call 717.964.1830 or email pachautauqua@gmail.com to register and get Zoom link. CHP

Wednesday, July 22

- 10:00am **MGSOA Lecture: Painting and Drawing the Landscape through Experience, Memory and Imagination**, with Aaron Lubrick. Call 717.964.1830 or email pachautauqua@gmail.com to register and get the Zoom link. CHP

(Wednesday, July 22 - continued)

- 10-4pm The Governor Dick Environmental Center open (tower and outside restrooms closed). EC/GDE
- 4:00pm **Yoga with Stephanie**. Call 717.964.1830 or email pachautauqua@gmail.com to receive the Zoom link. CHP

Thursday, July 23

- 9-5pm **Tulips with Raindrops**, a Robert Warren Painting Seminar. \$95. More information at <https://www.3summerarts.com/classes/274>
- 10:00am **Religious Discussion Series: Via Dolorosa: A Specious Tradition**, with Dr. William Stotler. 717.964.1830 or email pachautauqua@gmail.com to receive the Zoom link. CHP
- 10-4pm The Governor Dick Environmental Center open (tower and outside restrooms closed). EC/GDE

Friday, July 24

- 9am Mt. Gretna Bird Club; meet in the Chautauqua parking lot; no experience needed; bring your binoculars. PL
- 10:00am **The Eight Dimensions of Health: The Intellectual Dimension**, with Janice Balmer. IV of VIII. 717.964.1830 or email pachautauqua@gmail.com to register and get Zoom link. CHP
- 10-4pm The Governor Dick Environmental Center open (tower and outside restrooms closed). EC/GDE
- 7:30-10:30pm Mt. Gretna Roller Rink open. \$8 plus blade/skate rental
- Dusk **Reels on Wheels: Labyrinth**. \$25 per vehicle. Advance online sales only at <http://www.parenfaire.com/reelsonwheels.html#about>

Saturday, July 25

- 10-4pm The Governor Dick Environmental Center open (tower and outside restrooms closed). EC/GDE
- 10:30am **Pond Scoop**: Put on your boots and meet at the Environmental Center to carpool 1/4 mile to a small pond where you will use nets to search for aquatic creatures. Maybe you'll meet a frog up close! Perhaps you'll find a dragonfly nymph - and learn what that is. There are so many fascinating organisms in a pond. Group size is limited to 10 so register early! Call 717.964.3808 or email governordick@hotmail.com to reserve your spot.
- 1-4:30pm MG Roller Rink open. \$6 plus blade/skate rental
- 1:30-4pm Mt. Gretna Roller rink open. \$6 plus blade/skate rental.
- 7:30-10:30pm Mt. Gretna Roller Rink open. \$8 plus blade/skate rental
- Dusk **Reels on Wheels: Labyrinth**. \$25 per vehicle. Advance online sales only at <http://www.parenfaire.com/reelsonwheels.html#about>

Sunday, July 26

- Worship (recorded) from Mt. Gretna United Methodist Church on their YouTubeChannel, Facebook page, or www.mtgretnachurch.org, available at 6am to be viewed at your convenience
- Worship online with Trinity Lutheran Church of Colebrook www.trinitylutherancolebrook.org or on their Facebook page; for pastoral needs, contact Pastor Cheri at 717.606.8851
- 1-5pm The Governor Dick Environmental Center open (tower and outside restrooms closed). EC/GDE
- 1:30pm **Golden Eagle Hikers**: If you are age 50 or older, join us for a fun 2- to 3-mile hike at an easier pace, and we'll see if we can order a little more sunshine this time! There are rocks, tree roots, and hills so wear sturdy shoes. Call 717.964.3808 or email governordick@hotmail.com to register.
- 7:30pm **Virtual Concert: The Naughtons**, Piano Duo. 45 minute performance, followed by a live chat. Connect via Gretna Music's Facebook page <https://www.facebook.com/GretnaMusic> or website <http://www.gretnamusic.org>. MAG

- more -

Current Mt. Gretna Business Hours:

(any changes in hours from previous week are capitalized/ underlined)

- The Jigger Shop:** open for takeout and deck dining Wednesday-Sunday 12-8pm
- Kirsch Antiques** (at the former Gretna Emporium): open Wednesday-Sunday 11:30-8pm
- La Cigale/The Gallery at La Cigale:** open weekdays from 11-5pm; masks required
- MG Hideaway:** deck open from 11:30am-12 Midnight Friday/Saturday and Sunday from 11:30am-10pm; takeout from 12-8pm daily. www.mtgretnahideaway.com
- MG Lake & Beach:** open daily 11:30am-6pm; admission limited AND by advance purchase on website ONLY. <http://www.mtgretnalake.com>
- MG Miniature Golf:** open 2-9pm daily
- MG Pizzeria:** takeout window open Thursday - Sunday, 8am-8pm
- MG Roller Rink:** Friday/Saturday 7:30-10:30pm \$8; Saturday, 1:30-4pm \$6; 1st/3rd Thursdays, 6:30-8:30pm Family Night \$4; skate/blade rental additional

- Porch & Pantry Cafe:** open Tuesday-Sunday, 8am-1pm
- Timbers Restaurant:** open Friday/Saturday 5:30-9pm for outdoor dining with a limited menu

The following organizations have cancelled or changed their anticipated programming until further notice:

- Bible Festival at the Tabernacle:** season cancellation
- Gretna Music:** concerts through July postponed until 2021
- Gretna Theatre:** season cancellation
- MG Area Historical Society:** season cancellation
- MG Campmeeting:** season cancellation
- MG Community Library:** not open, but free materials are available on the porch
- MG Heritage Festival:** performances through July cancelled
- MG Summer Concerts at the Tabernacle:** season cancelled
- MG, the PA Chautauqua:** programs in the Hall of Philosophy cancelled; virtual programming as noted in the calendar
- Original Mt. Gretna Cicada Music Festival:** season cancelled

"This Week in Mt. Gretna" is produced by Lightkeeper Consulting (717.507.2667 or info@lightkeeper.net), in association with this publication's advertisers; also available by free subscription via email by request. Weekly advertising space is available. To alter/add your event to the schedule or advertise, please contact Kathy Snively at Lightkeeper Consulting - 717.507.2667 or info@lightkeeper.net.

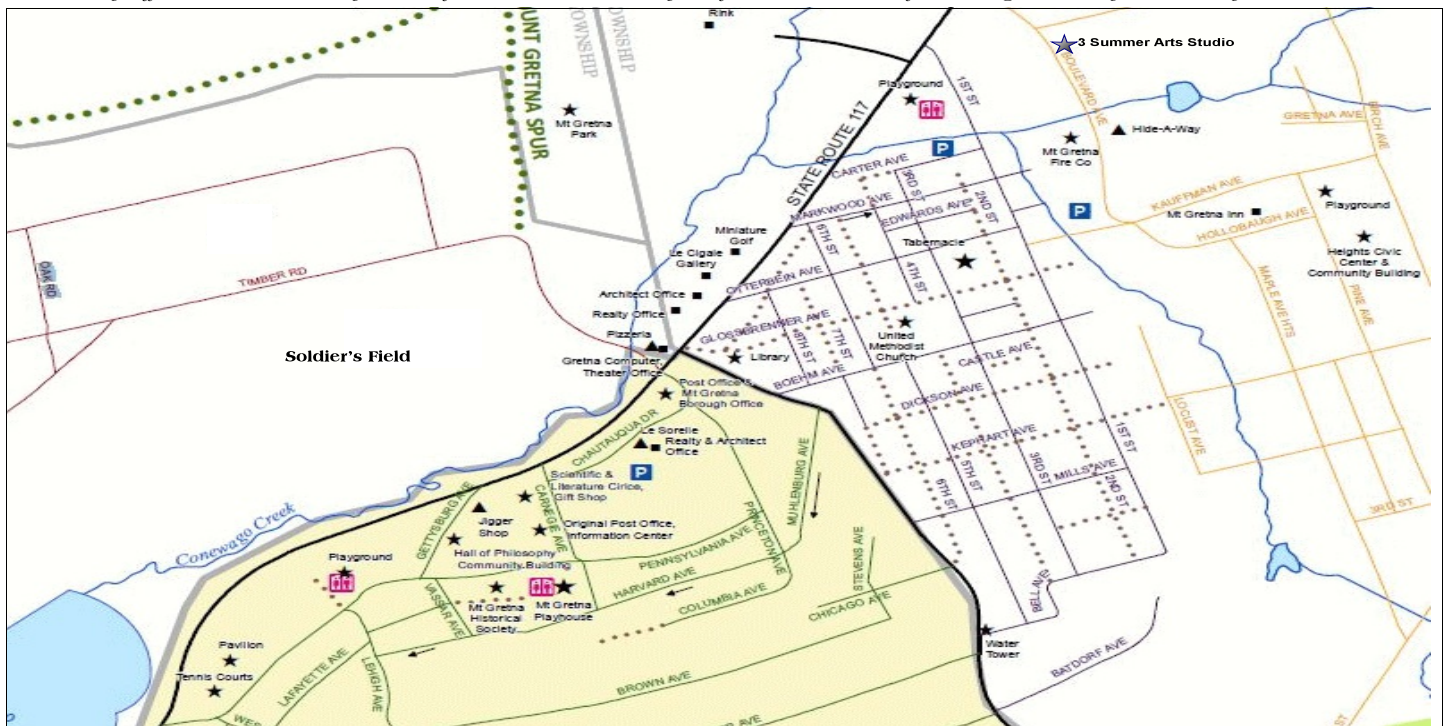
Program/Activity Location Codes (Two letters):

- | | | |
|-------------------------------------|-------------------------------|--------------------------------------|
| CG*Chautauqua grounds | HC*Heights Community Building | PH*Playhouse |
| CP*Chautauqua playground | HP*Hall of Philosophy | PL*Chautauqua parking lot |
| EC*Governor Dick Environmental Ctr. | LB*Mt. Gretna Library | TB*Campmeeting Tabernacle |
| FH*Mt. Gretna Fire Hall/parking lot | MC*Methodist Church | TC*Tennis Courts/Tennis Club Grounds |

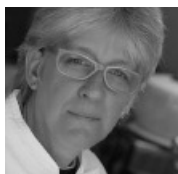
Sponsoring Organization Codes (Three letters):

- | | | |
|---|--|---|
| ACN * Mt. Gretna Arts Council | GDE * Governor Dick Environmental Center | LIB * Mt. Gretna Community Library |
| BBF * Bible Festival/Summer at the Tabernacle | GLC * The Gallery at LaCigale | MAG * Music at Gretna |
| CFN * Pennsylvania Chautauqua Foundation | GTH * Gretna Theatre | OAS * Outdoor Art Show |
| CHP * Chautauqua Summer Programs | HCA * Heights Community Association | SOA * Mt. Gretna School of Art |
| CIC * Original Mt. Gretna Cicada Festival | HER * Heritage Festival | UMC * United Methodist Church |
| CMP * Campmeeting Association | HIS * Mt. Gretna Area Historical Society | VFC * Mt. Gretna Volunteer Fire Company |

Map Notes: (Le Sorelle) on the map is now the Porch & Pantry Cafe; also in that building is Penn Realty and Mt. Gretna Realty, along with the Jonestown Bank & Trust's ATM on Chautauqua Drive; the Gift Shop is Kirsch's Antiques; the Timbers is located at the end of Timber Road; to get to the Lake, follow Timber Rd. and take the first left turn; the building marked Realty Office on Rt. 117 is currently available for lease. And Mrs. Hernley sells flowers across the street from La Cigale, on Fridays and Saturdays.



Chef on the Go



From Casual to Elegant Affairs
Dinner Parties, Receptions,
Special Occasions by
Rebecca Briody
964-3541



3 Summer Arts Studio

Day & Evening Art Classes

For information on classes and to sign up please visit our website at www.3SummerArts.com
14 Park Ave.
Mt. Gretna, PA 17064
717.964-3330

Need Cash?

In Mount Gretna, an ATM is available at Porch & Pantry on Chautauqua Drive.



Member FDIC



Gretna Computer Consulting
Hardware Service & Sales
Software Support

9-5pm * Rt. 117 * Mt. Gretna
964-1106