

# This Week in Mt. Gretna

Celebrating our 26<sup>th</sup> year of service to the Mt. Gretna Community ❖ Friday, July 12, 2024  
The 132nd Season ❖ Mt. Gretna Visitor Information Center open 11am-7pm, Tuesday-Sunday

## Friday, July 12

- 9am MG Bird Club: bring your binoculars. 717.964.3412 PL  
10am **Poetry With Jesse Waters:** *One Could do Worse: Swinging Birches and the Ars Poetica, or, Poems About Poetry.* Part one of two. HP/CHP  
10-12pm MG Library open  
10-4pm Governor Dick Environmental Center open. EC/GDE  
5-6:30pm Happy Hour with Nate. Campmtg. members only. Heritage Park  
7:30pm **Chess: In Concert:** this gripping musical was inspired by the international spectacle of the 1972 World Chess Championship between Bobby Fischer and Boris Spassky. \$45/39. PH/GTH  
8-11am **Blessing & Fowler** performs at the MG Hideaway

## Saturday, July 13

- 8:30-4pm **Chautauqua University Day:** Israel/Hamas (Zachman); Making Music American (Bomberger); Anabaptist Presidents (Benowitz); Just Say "Know" to Industrial Hemp (House); end with wine tasting. Pre-register by July 6. \$60 includes lunch by Chef on the Go. HP/CHP  
9am Quoits, under the canopy on Rt. 117. Beginners welcome. For more info, text 732.496.5405.  
10am **History on the Porch:** join local historians for coffee and conversation on the museum porch. HIS  
10-4pm Governor Dick Environmental Center open. EC/GDE  
10-5pm **Save the Monarchs** (oil painting). SOLD OUT. 3Summer Arts  
10-1pm MG Library open  
11am **Foraging Hike:** come learn to identify wild edibles in the park. Free. Pre-register: 717.964.3808 or [governordick@hotmail.com](mailto:governordick@hotmail.com). EC/GDE  
7:30pm **Beach Bash & Parrothead Party:** join us for a night of your favorite Beach Music, featuring hits from Frankie Avalon to Katy Perry. Wear your Hawaiian shirt and pay what you want! TB/MS  
7:30pm **Chess: In Concert.** See Friday listing.  
8-11pm **The Thompson Triplets** perform at the MG Hideaway

## Sunday, July 14

- 8:30am Worship. MC/UMC  
10am Worship. TB/UMC  
10am **Worship** at Trinity Lutheran Church of Colebrook, 58 Church Rd., Manheim; 717.606.8851  
10am **Worship:** Rev. Amy Shorner-Johnson, Chaplain, Elizabethtown College, with Ann and Cris Dinsmore, vocalists. Coffee and conversation afterwards. PH/CHP

(Sunday, July 14 - continued)

- 10am **Fitness Hike:** a faster paced 4-6 mile hike; wear good shoes and bring water. Free. Pre-register: 717.964.3808 or [governordick@hotmail.com](mailto:governordick@hotmail.com). EC/GDE  
10-1pm MG Library open  
2pm **Chess: In Concert.** See Friday listing.  
5-8pm Therapy Barn performs at the MG Hideaway  
6pm **Second Sunday Summer Concert Series:** dinner at 6pm by *Wich Way Sandwiches* w/desserts by CUMC. Music at 7pm w/*Blessing & Fowler*. Inside the fellowship hall; free will offering. Cornwall UM Church  
7pm **Dr. Chris Walker, Sr.** Pastor at Westminster Presbyterian Church, Lancaster, PA, preach at our service with music by the church musicians. TB/BBF

## Monday, July 15

- 10-12pm MG Library open  
1pm Mah Jongg: call 717.200.1187 for more information. HP/CHP  
7pm **Book Review:** Kevin Kawn's *Lies and Weddings*, with Kevin Wells. LIB  
7:15pm **MGSOA Artist Talk:** *EM Saniga's Paintings & Drawings from 1985 - 2020*, hosted by Jay Noble. In-person & online. HP/SOA/CHP  
10am **LVC Book Review:** *Lori Gottlieb's Maybe You Should Talk to Someone*, reviewed by Kathleen Richardson, Asst. Professor of Clinical Mental Health Counseling HP/CHP

## Tuesday, July 16

- 10-12pm MG Library open  
6pm **Copycat Recipes:** we'll prepare and sample Red Lobster's Cheddar Biscuits, Olive Garden's Chicken Gnocchi Soup, Starbucks' Lemon Loaf & Applebee's' Cilantro Lime Coleslaw, with Kathy Snavely. Class limit 20. Must pre-register by 7/10 at <https://tiny.cc/#> \$20. HP/CHP  
6-8pm MG Library open

## Wednesday, July 17

- 10am **Childrens Story Time Hour and Craft Hour:** join us for story time and craft. Children must be accompanied by an adult. LIB  
10am **MGSOA Artist Talk:** *Stanley Lewis presents William H. Johnson's paintings.* Join in-person or online at [MGSOA.org/calendar](http://MGSOA.org/calendar). Hosted by Jay Noble. HP/SOA/CHP

- continued -

Our thanks to the Mt. Gretna Arts Council for compiling and producing the summer calendar on [www.mtgretna.org](http://www.mtgretna.org). Tax-deductible donations, of any amount, are most appreciated and can be forwarded to the "Mt. Gretna Arts Council," PO Box 513, Dept. TWIMG, Mt. Gretna, Pennsylvania 17064-0513. Their website is [www.artscouncil.mtgretna.com/](http://www.artscouncil.mtgretna.com/)

"This Week in Mt. Gretna" is produced by Lightkeeper Consulting (717.507.2667 or [info@lightkeeper.net](mailto:info@lightkeeper.net)), in association with the Mt. Gretna Arts Council and this publication's advertisers; also available by free subscription via email by request. Weekly advertising space is available; contact Lightkeeper Consulting.

(Wednesday, July 17 - continued)

- 10-12pm MG Library open
- 10-4pm Governor Dick Environmental Center open. EC/GDE
- 10:30am **Make Your Own Greeting Cards:** Create 3 - 4 greeting cards for any occasion. Supplies provided. Register by emailing: [mgumc@verizon.net](mailto:mgumc@verizon.net). Cost: \$10. Fellowship Hall/UMC
- 4pm Yoga: find calm, peace. 717.269.2455 for info. \$8. HP/CHP
- 6-8pm MG Library open
- 7pm **Agatha Christie Film: *Death on the Nile* (1978).** An heiress is murdered while honeymooning on a Nile cruise. This book ranks at the top of Christie's very best, with host Ted Martin. Donation appreciated. HP/CHP
- 6-9pm **Acoustic Stew** performs at the MG Hideaway

**Thursday, July 18**

- 10am **Decades That Transformed #5 1960s: The Cultural Revolution:** *The Times They Are a - Changin.* Today's crossroads require a look back at historical events; with Dr. Lee Barrett & Dr. Randall Zachman. HP/CHP
- 10am **Yoga for Kids,** led by Pat Steely. Open to grades 1+. No charge. Please accompany children ages 10 and under. Stacey's Place Playground Gazebo/CHP
- 10-12pm MG Library open
- 10-4pm Governor Dick Environmental Center open. EC/GDE
- 2pm **Chess: In Concert.** See previous Friday listing.
- 7:30pm **Chess: In Concert.** See previous Friday listing.
- 8-11pm General Trivia at the MG Hideaway

**Friday, July 19**

- 9am MG Bird Club. See previous Friday listing.
- 10am **Poetry With Jesse Waters:** *One Could do Worse: Swinging Birches and the Ars Poetica, or, Poems About Poetry.* HP/CHP
- 10-12pm MG Library open
- 10-4pm Governor Dick Environmental Center open. EC/GDE
- 11am **Nature Suncatchers:** collect some leaves and flowers, then make a lovely suncatcher. Ages 3+. Free. Pre-register [717.964.3808/governordick@hotmail.com](tel:717.964.3808). EC/GDE
- 5-6:30pm Happy Hour with Nate. Campmtg. members only. Heritage Park
- 7pm **MGSOA Artist Talk:** *John Goodrich, Against Escapism,* hosted by Jay Noble; in-person and online. HC/SOA
- 7:30pm **Chess: In Concert.** See July 12 listing.
- 8-11pm **Adam Blessing** performs at the MG Hideaway
- 9pm **Full Moon Hike:** rain date July 20. Free. Pre-register [964.3808/governordick@hotmail.com](tel:964.3808). EC/GDE

**Saturday, July 20**

- 8-11am **Cornwall Fire Company Breakfast** at Alden Place. \$11
- 9am Quoits, under the canopy on Rt. 117. Beginners welcome. For more info, text 732.496.5405.
- 10-1pm MG Library open
- 10-4pm Governor Dick Environmental Center open. EC/GDE
- 10am **Tree Identification Hike:** come learn to identify trees in the park, based on their leaves, bark, buds and more. Free. Pre-register [964.3808](tel:964.3808) or [governordick@hotmail.com](mailto:governordick@hotmail.com). EC/GDE
- 11am **Knuffle Bunny: A Cautionary Musical,** based on the beloved Caldecott Honor-winning picture book, is filled with adventure, song and dancing - an instant children's classic! PH/GTH
- 11-2pm **Community Picnic & Rescue Engine Housing.** FH/VFC

(Saturday, July 20 - continued)

- 1pm **Meet Author Wendy Ulmer,** born in Lebanon, PA. She'll share her trilogy of fun-filled early reader books. Join us for a backstory of Mt. Gretna and PA! LIB
- 2pm **Chess: In Concert:** see July 12 listing
- 7:30pm **Broadway's Greatest Hits 2024:** join Kate Nice, John Smitherman, Felicia Wilkins & Noah Bloom for a Broadway music night. Pay what you want for admission. Always a hit with Gretna audiences. TB/MSC
- 7:30pm **Chess: In Concert:** see July 12 listing. CLOSING.
- 8-11pm **Down to Earth** performs at the MG Hideaway

**Sunday, July 21**

- 7-11am **Motorcycle Breakfast:** all you can eat! \$15. Lawn Fire Co.
- 8:30am Worship. MC/UMC
- 10am Worship. TB/UMC
- 10:00am **Worship** at Trinity Lutheran Church of Colebrook, 58 Church Rd., Manheim; 717.606.8851
- 10am **Worship Service:** Rev. Rick Luciotti, Coordinator of Care to Clergy & Families, Penn Central Synod, UCC and Carl Iba, violinist. Coffee and conversation afterwards. PH/CHP
- 10-1pm MG Library open
- 1:30pm **Golden Eagle Hikers:** a slower-paced 2-3 mile hike for those over 50. Free. Pre-register [964.3808](tel:964.3808) or [governordick@hotmail.com](mailto:governordick@hotmail.com). EC/GDE
- 4pm **Drum Circles:** Year of the Arts Music Event. All welcome. HC
- 6:45-7:05pm **First Listen:** mini-concerts by our area's most talented youths. Free. PH/GM!
- 7pm **Knotwork Band:** celtic folk from Ireland, Scotland, England, & Brittany + American & World music tied to Celtic folk. Freewill offering. TB/BBF
- 7:30pm **Island Prayers with Turtle Island Quartet** featuring works by Terence Blanchard, Jerod Impichchaachaaha' Tate, Rhiannon Giddens and David Balakrishnan. PH/GM!

*Porches of Mount Gretna*  
A PHOTO JOURNAL



SHANNON FRETZ + KERRY ROYER

**NEW RELEASE: Now available at the  
Mt. Gretna Visitor Information Center!**

CG \* Chautauqua grounds  
 CP \* Chautauqua playground  
 EC \* Governor Dick Environmental Ctr.  
 FH \* MG Fire Hall/parking lot

**Program/Activity Location Codes (Two letters):**

HC \* Heights Community Building  
 HP \* Hall of Philosophy  
 HS \* MG Area Historical Society  
 LB \* MG Library  
 MC \* Methodist Church

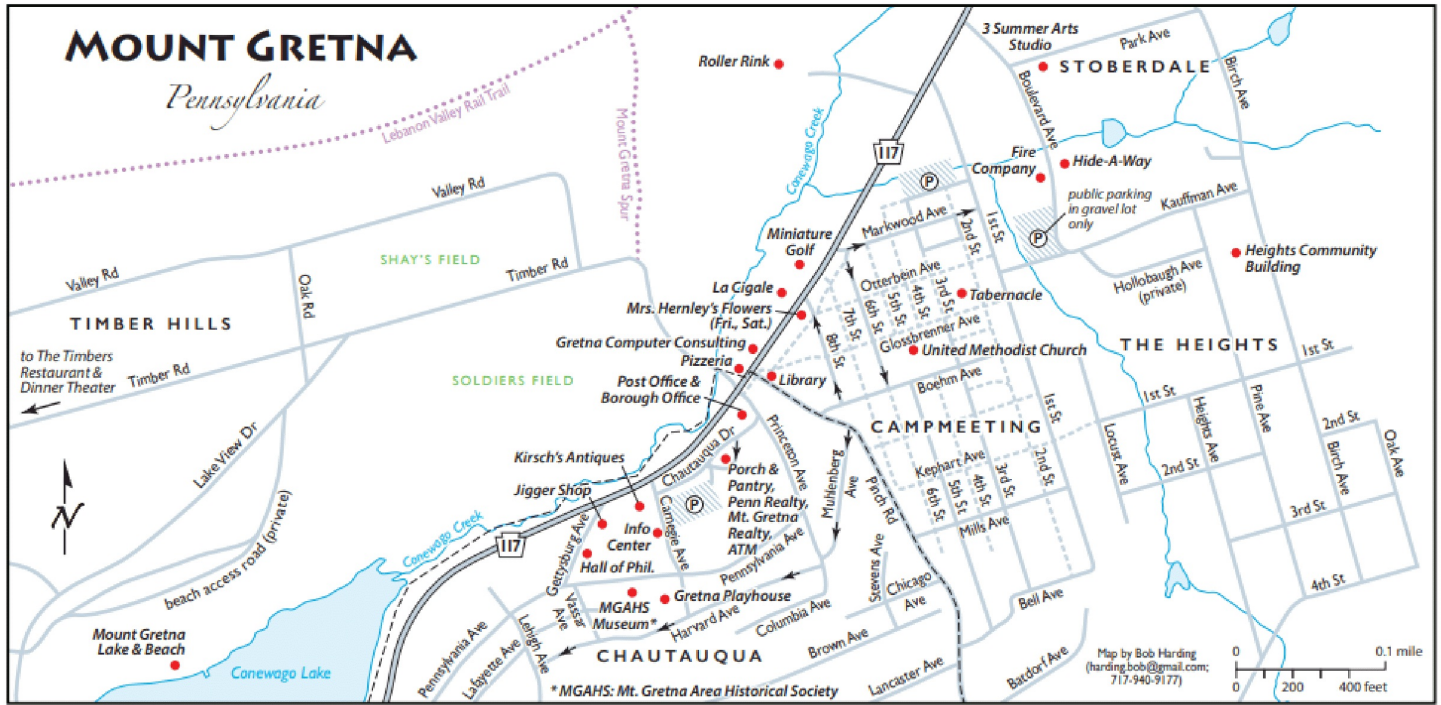
PG \* Chautauqua Playground  
 PH \* Playhouse  
 PL \* Chautauqua parking lot  
 TB \* Campmeeting Tabernacle  
 TC \* Tennis Courts/Tennis Club Grounds

ACN \* MG Arts Council  
 BBF \* Bible Festival/Summer at the Tabernacle  
 CFN \* Pennsylvania Chautauqua Foundation  
 CHP \* Chautauqua Summer Programs  
 CIC \* Original MG Cicada Festival  
 CMP \* Campmeeting Association

**Sponsoring Organization Codes (Three letters):**

GDE \* Governor Dick Environmental Center  
 GM! \* Greta Music  
 GTH \* Greta Theatre  
 HCA \* Heights Community Association  
 HER \* Heritage Festival  
 HIS \* MG Area Historical Society

LIB \* MG Community Library  
 MSC \* MG Summer Concerts  
 OAS \* Outdoor Art Show  
 SOA \* MG School of Art  
 UMC \* United Methodist Church  
 VFC \* MG Volunteer Fire Company



Map Notes: (Le Sorelle) on the map is now the Porch & Pantry Café; also in that building is Penn Realty and Mt. Gretna Realty, along with the Jonestown Bank & Trust's ATM on Chautauqua Drive; the Gift Shop is Kirsch's Antiques; the Timbers is located at the end of Timber Road; to get to the Lake, follow Timber Rd. and take the first left turn; the building marked Realty Office on Rt. 117 is privately owned. And Mrs. Hernley sells flowers across the street from La Cigale, on Fridays and Saturdays.

PA CHAUTAUQUA SUMMER PROGRAMS

## Decades That Transformed the Modern Western World

WITH DR. LEE BARRETT AND DR. RANDALL ZACHMAN

HALL OF PHILOSOPHY

Thursdays from June 13th-July 25th at 10am

June 13th-1510s-20s: The European Reformation  
 June 20th-1690s-1720s: Enlightenment  
 June 27th-1780s-1790s: French Revolution  
 July 11th-1910s-1920s: Collapse of the Old Order  
 July 18th-The 1960s: The Cultural Revolution  
 July 25th-2010s: The Acceleration of Polarization

COME SUPPORT THE COMMUNITY FIRE COMPANY OF CORNWALL BOROUGH

FUNDRAISER BREAKFAST TO FUND THE PURCHASE OF A LIFE-SAVING TOOL – Amkus Combi Tool

WHEN: SATURDAY, JULY 20 8 AM TO 11 AM  
 WHERE: ALDEN PLACE COMMUNITY BALLROOM  
 100 Freeman Drive, Lebanon, PA

ALL WELCOME – YOU DO NOT HAVE TO BE A RESIDENT TO ATTEND

RAFFLE BASKETS, VOLUNTEER INFORMATION & FIRE TRUCKS WILL BE AVAILABLE - Eat In OR Take Out

Breakfast for Donation – Suggested Price \$11!

Menu – Pancakes, sausages, scrambled eggs, home fries, assorted baked goods, coffee, tea, milk, orange juice, fruit

HELP US SO WE ARE PREPARED TO HELP YOU!

PA CHAUTAUQUA SUMMER PROGRAMS

## POETRY WITH JESSE WATERS

EVERY WEEK

FRIDAYS AT 10AM

JUNE 7TH-AUGUST 2ND

## HALL OF PHILOSOPHY

VISIT WWW.PACHAUTAUQUA.INFO FOR INDIVIDUAL LISTINGS OF PROGRAMS



Located next door to the Playhouse

Saturdays and Sundays, from 1-4pm  
through September 4  
Research Library open by appointment

[mtgretnahistory@gmail.com](mailto:mtgretnahistory@gmail.com)  
[www.mtgretnahistory.org](http://www.mtgretnahistory.org)  
<https://www.facebook.com/MGAHS>  
717.964.1105



Advance tickets ONLY  
[www.mtgretnalake.com](http://www.mtgretnalake.com)  
Open 11:30am - 6:30pm daily  
through Labor Day

964-3130



Monday & Tuesday  
3pm-12am  
Wednesday & Thursday  
11:30am-12am  
Friday - Sunday  
11:30am - 2am

675-7987

Thursday - Saturday at 5:30pm  
First Fridays with Art & Music



Restaurant & Theater

One mile up Timber Road  
For reservations  
964-3601

### Chef on the Go



CATERING  
[rbchefonthego.com](http://rbchefonthego.com)  
Rebecca Briody  
964-3541



HICKEY ARCHITECTS INC.  
499 Rt. 117 / PO Box 5  
Mt. Gretna, PA 17064  
T. 717.964.2305  
[www.hickeyarchitects.com](http://www.hickeyarchitects.com)

RESIDENTIAL • HISTORIC PRESERVATION  
INTERIOR DESIGN • SUSTAINABLE DESIGN



### Trinity Lutheran Church of Colebrook

10 am Worship

717-665-6670  
58 Church Road, Manheim

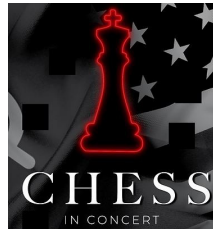
Five minutes away; turn left  
at Colebrook/go 1.4 miles  
[trinitylutherancolebrook.org](http://trinitylutherancolebrook.org)  
and Facebook for events



Burgers, Fries & Ice Cream  
This Week's Ice Cream Flavors:  
Mocha, Orange &  
Hot Fudge Brownie Sundae

Mon-Sat 11am-9pm  
Sunday 1-9pm  
1550 Colebrook Road

Gretna Theatre July 11-20



[www.gretnatheatre.org](http://www.gretnatheatre.org)  
Box Office 717.964.3827

The Perfect CD  
For You.  
Just You.

jbt Bank on a Smile:  
jbt.bank

\$1,000 minimum deposit for certificates of deposit. Interest rates subject to change without notice. Fees may reduce earnings. Penalty for early withdrawal. Offer may be withdrawn without notice.

Hand-crafted concerts  
June 21 - Sept 7  
[gretnamusic.org](http://gretnamusic.org)  
Vivaldi's  
Four Seasons - rediscovered  
Apollo's Fire  
July 22 7:30 pm



### MT. GRETNA SUMMER CONCERTS AT THE TABERNACLE

SAT., JULY 13

BEACH BASH &



7:30 P.M. Rain or Shine

Pay What You Want

I Live, Love, List & Sell Mt. Gretna!



Rhoda Long, Realtor ®  
Call/Text 717 304-0248

Visit My Website

[RhodaLong.com](http://RhodaLong.com)



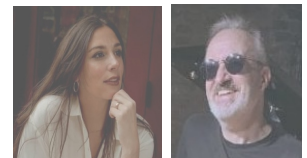
717 279-6222



"Mount Gretna in the summer... In our opinion, there's nothing better!"

[Lebtown.com/Gretna/](http://Lebtown.com/Gretna/)

### Mt. Gretna Heritage Festival



Perrin & Steinway  
at the Tabernacle

July 26 at 7:30pm  
Pay What You Want