

# This Week in Mt. Gretna

Celebrating our 26<sup>th</sup> year of service to the Mt. Gretna Community ❖ Friday, July 19, 2024  
The 132nd Season ❖ Mt. Gretna Visitor Information Center open 11am-7pm, Tuesday-Sunday

## Friday, July 19

- 9am MG Bird Club: bring your binoculars. 717.964.3412 PL  
10am **Poetry With Jesse Waters:** *One Could do Worse: Swinging Birches and the Ars Poetica, or, Poems About Poetry.* HP/CHP  
10-12pm MG Library open  
10-4pm Governor Dick Environmental Center open. EC/GDE  
11am **Nature Suncatchers:** collect some leaves/flowers, then make a lovely suncatcher. Ages 3+. Free. Pre-register [717.964.3808/governordick@hotmail.com](mailto:governordick@hotmail.com). EC/GDE  
5-6:30pm Happy Hour with Nate. Campmeeting members only. Heritage Park  
7pm **MGSOA Artist Talk:** *John Goodrich, Against Escapism*, hosted by Jay Noble; in-person and online. HC/SOA  
7:30pm **Chess: In Concert:** this gripping musical was inspired by the international spectacle of the 1972 World Chess Championship between Bobby Fischer and Boris Spassky. \$45/39. PH/GTH  
8-11pm **Adam Blessing** performs at the MG Hideaway  
9pm **Full Moon Hike:** rain date July 20. Free. Pre-register 964.3808/[governordick@hotmail.com](mailto:governordick@hotmail.com). EC/GDE

## Saturday, July 20

- 8-11am **Cornwall Fire Company Breakfast** at Alden Place. \$11  
9am Quoits, under the canopy on Rt. 117. Beginners welcome. For more info, text 732.496.5405.  
10-1pm MG Library open  
10-4pm Governor Dick Environmental Center open. EC/GDE  
10am **Tree Identification Hike:** come learn to identify trees in the park, based on their leaves, bark, buds and more. Free. Pre-register 964.3808 or [governordick@hotmail.com](mailto:governordick@hotmail.com). EC/GDE  
11am **Knuffle Bunny: A Cautionary Musical**, based on the beloved Caldecott Honor-winning picture book, is filled with adventure, song and dancing - an instant children's classic! \$10. PH/GTH  
11-2pm **Community Picnic & Rescue Engine Housing.** FH/VFC  
1pm **Meet Author Wendy Ulmer**, born in Lebanon, PA. She'll share her trilogy of fun-filled early reader books. Join us for a backstory of Mt. Gretna and PA! LIB  
2pm **Chess: In Concert:** see Friday listing.  
7:30pm **Broadway's Greatest Hits 2024:** join Kate Nice, John Smitherman, Felicia Wilkins & Noah Bloom for a Broadway music night. Pay what you want for admission. Always a hit with Gretna audiences. TB/MSC  
7:30pm **Chess: In Concert:** see Friday listing. CLOSING.  
8-11pm **Down to Earth** performs at the MG Hideaway

## Sunday, July 21

- 7-11am **Motorcycle Breakfast:** all you can eat! \$15. Lawn Fire Co.  
8:30am Worship. MC/UMC  
10am Worship. TB/UMC  
10:00am **Worship** at Trinity Lutheran Church of Colebrook, 58 Church Rd., Manheim; 717.606.8851  
10am **Worship Service:** Rev. Rick Luciotti, Coordinator of Care to Clergy & Families, Penn Central Synod, UCC and Carl Iba, violinist. Coffee and conversation afterwards. PH/CHP  
10-1pm MG Library open  
1:30pm **Golden Eagle Hikers:** a slower-paced 2-3 mile hike for those over 50. Free. Pre-register 964.3808 or [governordick@hotmail.com](mailto:governordick@hotmail.com). EC/GDE  
4pm **Drum Circles:** Year of the Arts Music Event. All welcome. HC  
6:45-7:05pm **First Listen:** mini-concerts by our area's most talented youths. Free. PH/GM!  
7pm **Knotwork Band:** celtic folk from Ireland, Scotland, England, & Brittany + American & World music tied to Celtic folk. Freewill offering. TB/BBF  
7:30pm **Island Prayers with Turtle Island Quartet** featuring works by Terence Blanchard, Jerod Impichchaachaaha' Tate, Rhiannon Giddens and David Balakrishnan. PH/GM!

## Monday, July 22

- 10am **Gretna Music for Kids:** family sing-along. Mr. Music of Pennsylvania PBS Kids, encourages everyone to join in as he performs favorite children's songs and original tunes! Free. HP/CHP/GM!  
10-12pm MG Library open  
1pm Mah Jongg:: call 717.200.1187 for more information. HP/CHP  
7:30pm **Vivaldi's Four Seasons with Apollo's Fire:** if you thought you knew the Four Seasons, be prepared for surprises! This Grammy award-winning ensemble is led by conductor Jeannette Sorrell. PH/GM!  
7pm **Book Review:** *Natures Best Hope.* A new approach to conservation that starts in your yard. Host: Margaret Hopkins. LIB  
7:15pm **MGSOA Artist Talk:** experience Kamini Avril's "The hand sees what the eye feels" at the MG School of Art, in-person or online. Register at [MGSOA.org/calendar](http://MGSOA.org/calendar). HC/CHP/MGSOA

- continued -

Our thanks to the Mt. Gretna Arts Council for compiling and producing the summer calendar on [www.mtgretna.org](http://www.mtgretna.org). Tax-deductible donations, of any amount, are most appreciated and can be forwarded to the "Mt. Gretna Arts Council," PO Box 513, Dept. TWIMG, Mt. Gretna, Pennsylvania 17064-0513. Their website is [www.artscouncil.mtgretna.com/](http://www.artscouncil.mtgretna.com/)

"This Week in Mt. Gretna" is produced by Lightkeeper Consulting (717.507.2667 or [info@lightkeeper.net](mailto:info@lightkeeper.net)), in association with the Mt. Gretna Arts Council and this publication's advertisers; **also available by free subscription via email by request.** Weekly advertising space is available; contact Lightkeeper Consulting.

### Tuesday, July 23

- 10am **LVC Book Review:** Holly Wendt's *Heading North*, reviewed by Holly Wendt, Assoc. Professor of English and Creative Writing. HP/CHP
- 10-12pm MG Library open
- 6-8pm MG Library open
- 6-8pm **The Enchanted Fairy Garden Plus.** Ages 5-12. \$30. Info: <https://www.3summerarts.com/classes/477>
- 7pm **The Religion of Race:** race, a polarizing political issue, has been used to divide, manipulate, and control groups of people. Explore the true history of race in America and how the promotion of race differs from its biblical account. Speaker: Rev. Dr. Joseph Green. HP/CHP

### Wednesday, July 24

- 10am **MGSOA Artist Talk:** Edmond Praybe, "Still Life: Conversations with Objects," hosted by Jay Noble, MGSOA, in person and online. <http://MGSOA.org/calendar>. HP/SOA
- 10am **Children's Story Time and Craft Hour:** join us for story time and craft. Children must be accompanied by an adult. LIB
- 10-12pm MG Library open
- 10-4pm Governor Dick Environmental Center open. EC/GDE
- 4pm Yoga: find calm, peace. 717.269.2455 for info. \$8. HP/CHP
- 6-8pm MG Library open
- 6-9pm **Painting Petal & White Flower Oils.** SOLD OUT. 3Summer Arts
- 7pm **Agatha Christie Film:** *The Mirror Crack'd* (1980). Angela Lansbury & Rock Hudson star with Elizabeth Taylor & Kim Novak as bickering actresses - with your host, Ted Martin. HP/CHP

### Thursday, July 25

- 10am **Decades That Transformed #6:** 2010s-The Acceleration of Polarization. Discover how we arrived at today's crossroads, with Dr. Lee Barrett and Dr. Randall Zachman. HP/CHP
- 10am **Yoga for Kids,** led by Pat Steely. Open to grades 1+. No charge. Please accompany children ages 10 and under. Stacey's Place Playground Gazebo/CHP
- 10-4pm Governor Dick Environmental Center open. EC/GDE
- 10-12pm MG Library open
- 6-8:30pm **Express Yourself: Collage/Mixed Medium.** \$25. Info at <https://www.3summerarts.com/classes/471>
- 8-11pm General Trivia at the MG Hideaway

### Friday, July 26

- 9am MG Bird Club. See previous Friday listing.
- 10am **Poetry With Jesse Waters:** *When Lines Make Other Lines but Fail to Rhyme: Voice and Value in the World of Blank Verse.* HP/CHP
- 10-12pm MG Library open
- 7pm **The Courage to Forget:** why do we feel the need to remember and digitally gather tons of data, compiling reams of info that we may never access. Should we wipe the slate clean? Do we dare? With Firmin DeBrabander. HP/CHP
- 7:30pm **Perrin & Steinway:** a jazz piano/vocal duo, with quartet. American standards and captivating originals. Pay-What-You-Want. TB/HER
- 8-11pm **Common Vine** performs at the MG Hideaway

### Saturday, July 27

- 10-1pm MG Library open
- 10-4pm Governor Dick Environmental Center open. EC/GDE
- 11am **Knuffle Bunny:** A Cautionary Musical, based on the beloved Caldecott Honor-winning picture book, is filled with adventure, song and dancing laundry. \$10. PH/GTH
- 6:45-7:05pm **First Listen:** mini-concerts by our area's most talented youths. Free. PH/GM!
- 7:30pm **Ultimate 70s Collection:** Sidestory Experience Atlantic City's hit group Sidestory, live with pay-what-you-want admission. Sing and dance to your favorite 70's tunes all night! TB/MS
- 7:30pm **Brandee Younger, jazz harp:** "Younger has almost single-handedly made a persuasive argument for the harp's role in contemporary jazz..." - The NYTimes. PH/GM!
- 8-11pm **The Palm City Ramblers** performs at the MG Hideaway

### Sunday, July 28

- 8:30am Worship. MC/UMC
- 10am Worship. TB/UMC
- 10am **Worship** at Trinity Lutheran Church of Colebrook, 58 Church Rd., Manheim; 717.606.8851
- 10am **Worship Service:** Rabbi Samuel Yolen, Keshet Israel Congregation, West Chester & Rev. Dr. Paul Schenck, Lebanon VA Medical Center, with the Susquehanna Chorale Quartet. PH/CHP
- 10am Worship in the Tabernacle
- 10-1pm MG Library open
- 10:30-5pm **MGSOA Annual Student Art Show:** support student artists! Buy art, attend public exhibition 10:30 AM -5:00 PM. Reception 10:30 AM - 1:00 PM. Awards announced at 1:00 PM. HP/SOA
- 5-8pm **The Mendez Brothers** perform at the MG Hideaway
- 6:45 -7:05pm **First Listen:** mini-concerts by our area's most talented youths. FREE. PH/GM!
- 7:00pm **Choir Festival:** Composer Craig Courtney directs 100 voices in a Sunday concert with flute and brass. Freewill offering. Sponsored by Loser's Music & Estate of Douglas Troutman. TB/BBF
- 7:30pm **Painting a Picture with Clarinet and Piano:** Clarinetist Marcus Eley's velvety, bright, soulful sounds are highlighted in music from the 30s and 40s, William Grant Still, Florence Price, as well as compositions from the evening's pianist, Todd Cochran. PH/GM!





CG \* Chautauqua grounds  
 CP \* Chautauqua playground  
 EC \* Governor Dick Environmental Ctr.  
 FH \* MG Fire Hall/parking lot

**Program/Activity Location Codes (Two letters):**

HC \* Heights Community Building  
 HP \* Hall of Philosophy  
 HS \* MG Area Historical Society  
 LB \* MG Library  
 MC \* Methodist Church

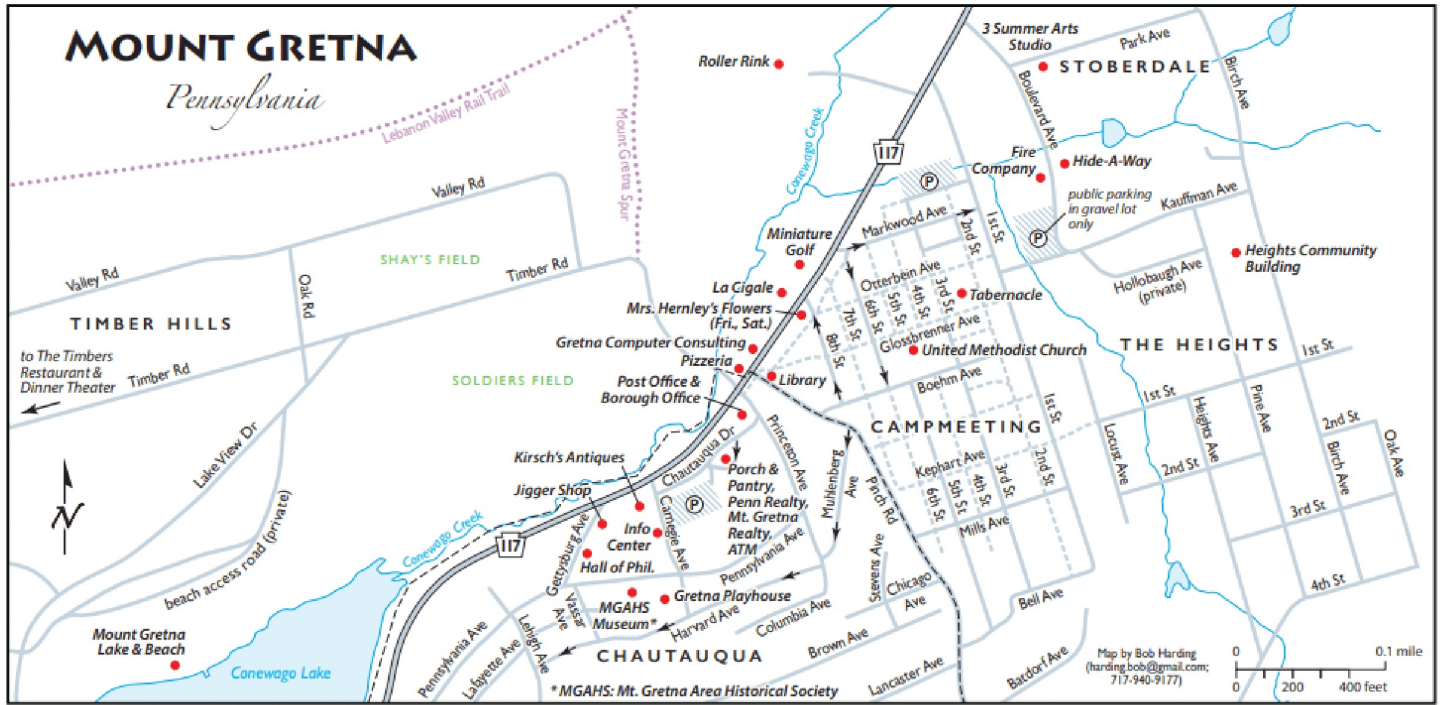
PG \* Chautauqua Playground  
 PH \* Playhouse  
 PL \* Chautauqua parking lot  
 TB \* Campmeeting Tabernacle  
 TC \* Tennis Courts/Tennis Club Grounds

ACN \* MG Arts Council  
 BBF \* Bible Festival/Summer at the Tabernacle  
 CFN \* Pennsylvania Chautauqua Foundation  
 CHP \* Chautauqua Summer Programs  
 CIC \* Original MG Cicada Festival  
 CMP \* Campmeeting Association

**Sponsoring Organization Codes (Three letters):**

GDE \* Governor Dick Environmental Center  
 GM! \* Greta Music  
 GTH \* Greta Theatre  
 HCA \* Heights Community Association  
 HER \* Heritage Festival  
 HIS \* MG Area Historical Society

LIB \* MG Community Library  
 MSC \* MG Summer Concerts  
 OAS \* Outdoor Art Show  
 SOA \* MG School of Art  
 UMC \* United Methodist Church  
 VFC \* MG Volunteer Fire Company



Map Notes: (Le Sorelle) on the map is now the Porch & Pantry Café; also in that building is Penn Realty and Mt. Gretna Realty, along with the Jonestown Bank & Trust's ATM on Chautauqua Drive; the Gift Shop is Kirsch's Antiques; the Timbers is located at the end of Timber Road; to get to the Lake, follow Timber Rd. and take the first left turn; the building marked Realty Office on Rt. 117 is privately owned. And Mrs. Hernley sells flowers across the street from La Cigale, on Fridays and Saturdays.

PA CHAUTAUQUA SUMMER PROGRAMS

## Decades That Transformed the Modern Western World

WITH DR. LEE BARRETT AND DR. RANDALL ZACHMAN

HALL OF PHILOSOPHY

Thursdays from June 13th-July 25th at 10am

June 13th-1510s-20s: The European Reformation  
 June 20th-1690s-1720s: Enlightenment  
 June 27th-1780s-1790s: French Revolution  
 July 11th-1910s-1920s: Collapse of the Old Order  
 July 18th-The 1960s: The Cultural Revolution  
 July 25th-2010s: The Acceleration of Polarization

COME SUPPORT THE COMMUNITY FIRE COMPANY OF CORNWALL BOROUGH

FUNDRAISER BREAKFAST TO FUND THE PURCHASE OF A LIFE-SAVING TOOL – Amkus Combi Tool

WHEN: SATURDAY, JULY 20 8 AM TO 11 AM  
 WHERE: ALDEN PLACE COMMUNITY BALLROOM  
 100 Freeman Drive, Lebanon, PA

ALL WELCOME – YOU DO NOT HAVE TO BE A RESIDENT TO ATTEND

RAFFLE BASKETS, VOLUNTEER INFORMATION & FIRE TRUCKS WILL BE AVAILABLE - Eat In OR Take Out

Breakfast for Donation – Suggested Price \$11!

Menu – Pancakes, sausages, scrambled eggs, home fries, assorted baked goods, coffee, tea, milk, orange juice, fruit

HELP US SO WE ARE PREPARED TO HELP YOU!

PA CHAUTAUQUA SUMMER PROGRAMS

## POETRY WITH JESSE WATERS

EVERY WEEK

FRIDAYS AT 10AM

JUNE 7TH-AUGUST 2ND

## HALL OF PHILOSOPHY

VISIT WWW.PACHAUTAUQUA.INFO FOR INDIVIDUAL LISTINGS OF PROGRAMS





Located next door to the Playhouse

Saturdays and Sundays, from 1-4pm  
through September 4  
Research Library open by appointment

[mtgretnahistory@gmail.com](mailto:mtgretnahistory@gmail.com)  
[www.mtgretnahistory.org](http://www.mtgretnahistory.org)  
<https://www.facebook.com/MGAHS>  
717.964.1105



Advance tickets ONLY  
[www.mtgretnalake.com](http://www.mtgretnalake.com)  
Open 11:30am - 6:30pm daily  
through Labor Day

964-3130



Monday & Tuesday  
3pm-12am  
Wednesday & Thursday  
11:30am-12am  
Friday - Sunday  
11:30am - 2am

675-7987

Thursday - Saturday at 5:30pm  
First Fridays with Art & Music



Restaurant & Theater

One mile up Timber Road  
For reservations  
964-3601

### Chef on the Go



CATERING  
[rbchefonthego.com](http://rbchefonthego.com)  
Rebecca Briody  
964-3541



HICKEY ARCHITECTS INC.  
499 Rt. 117 / PO Box 5  
Mt. Gretna, PA 17064  
T. 717.964.2305  
[www.hickeyarchitects.com](http://www.hickeyarchitects.com)

RESIDENTIAL • HISTORIC PRESERVATION  
INTERIOR DESIGN • SUSTAINABLE DESIGN



### Trinity Lutheran Church of Colebrook

10 am Worship

717-665-6670  
58 Church Road, Manheim

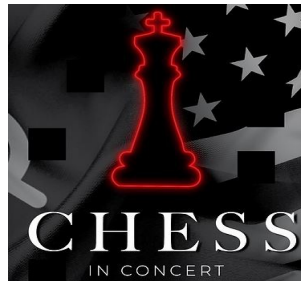
Five minutes away; turn left  
at Colebrook/go 1.4 miles  
[trinitylutherancolebrook.org](http://trinitylutherancolebrook.org)  
and Facebook for events



Burgers, Fries & Ice Cream  
This Week's Ice Cream Flavors:  
Mint & Salted Caramel

Mon-Sat 11am-9pm  
Sunday 1-9pm  
1550 Colebrook Road

Gretna Theatre July 11-20



[www.gretnatheatre.org](http://www.gretnatheatre.org)  
Box Office 717.964.3627

The Perfect CD  
For You.  
Just You.

jbt Bank on a Smile:  
jbt.bank

Member FDIC  
\$1,000 minimum deposit for certificates of deposit. Interest rates subject to change without notice. Fees may reduce earnings. Penalty for early withdrawal. Offer may be withdrawn without notice.

Hand-crafted concerts  
June 21 - Sept 7  
[gretnamusic.org](http://gretnamusic.org)  
Vivaldi's  
Four Seasons - rediscovered  
Apollo's Fire  
July 22 7:30 pm



### MT. GRETNA SUMMER CONCERTS

AT THE TABERNACLE  
3<sup>RD</sup> ST. & GLOSSBRENNER AVE.

SAT., JULY 20  
THE GREATEST HITS OF  
BROADWAY



7:30 P.M. Rain or Shine  
Pay What You Want

I Live, Love, List & Sell Mt. Gretna!



Rhoda Long, Realtor ®  
Call/Text 717 304-0248



[RhodaLong.com](http://RhodaLong.com)



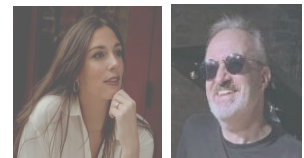
717 279-6222



"Mount Gretna in the summer... In our opinion, there's nothing better!"

[Lebtown.com/Gretna/](http://Lebtown.com/Gretna/)

### Mt. Gretna Heritage Festival



Perrin & Steinway  
at the Tabernacle

July 26 at 7:30pm  
Pay What You Want