

This Week in Mt. Gretna

Celebrating our 21st year of service to the Mt. Gretna Community ❖ Friday, July 3, 2020
The 128th Season ❖ Visitor Center open Wednesday-Sunday 11:30am-3:30pm

Friday, July 3

- 9am Mt. Gretna Bird Club; meet in the Chautauqua parking lot; no experience needed; bring your binoculars. PL
- 10:00am **Great American Poets:** *Emily Dickinson*, with Jesse Waters. Call 717.964.1830 or email pachautauqua@gmail.com to register and get Zoom link. CHP
- 10-4pm The Governor Dick Environmental Center open (tower and outside restrooms closed). EC/GDE
- 12 Noon **Gretna Theatre's USO Troupe Live Stream;** available through Sunday, July 5 at 10pm. Watch the performance, filmed last summer on the Mt. Gretna Playhouse stage, at your convenience! More info at: <https://sforce.co/2NuSexh>
- 7-10pm **Ryan Moran** performs at the MG Hideaway
- 7:30-10:30pm Mt. Gretna Roller Rink open. \$8 plus blade/skate rental
- Dusk **Reels on Wheels:** *Dirty Dancing*. \$25 per vehicle. Advance online sales only at <http://www.parenfaire.com/reelsonwheels.html#about>

Saturday, July 4

- 10-4pm The Governor Dick Environmental Center open (tower and outside restrooms closed). EC/GDE
- 1-3pm MG Roller Rink. \$6 plus blade/skate rental
- 7:30-10:30pm Mt. Gretna Roller Rink open. \$8 plus blade/skate rental
- Dusk **Reels on Wheels:** *Dirty Dancing*. \$25 per vehicle. Advance online sales only at <http://www.parenfaire.com/reelsonwheels.html#about>

Available all day - Gretna Theatre's USO Troupe Live Stream; available through Sunday, July 5 at 10pm. Watch the performance, filmed last summer on the Mt. Gretna Playhouse stage, at your convenience! More info at: <https://sforce.co/2NuSexh>

Sunday, July 5

Worship (recorded) from Mt. Gretna United Methodist Church on their YouTubeChannel, Facebook page, or www.mtgretnachurch.org, available at 6am to be viewed at your convenience

(Sunday, July 6 - continued)

- Worship online with Trinity Lutheran Church of Colebrook www.trinitylutherancolebrook.org or on their Facebook page; for pastoral needs, contact Pastor Cheri at 717.606.8851
- 1-5pm The Governor Dick Environmental Center open (tower and outside restrooms closed). EC/GDE
Available until 10pm - Gretna Theatre's USO Troupe Live Stream; available through Sunday, July 5 at 10pm. Watch the performance, filmed last summer on the Mt. Gretna Playhouse stage, at your convenience! More info at: <https://sforce.co/2NuSexh>

Tuesday, July 7

- 10:00am **LVC Book Review:** *Liza Mundy's Code Girls: the Untold Story of the American Women Code Breakers of World War II*, with Kevin Pry. Call 717.964.1830 or email pachautauqua@gmail.com to register and get Zoom link. CHP

Wednesday, July 8

- 10:00am **MGSOA Lecture:** *Fresh Air Club*, with Lynette Lomard. Call 717.964.1830 or email pachautauqua@gmail.com to register and get the Zoom link. CHP
- 10-4pm The Governor Dick Environmental Center open (tower and outside restrooms closed). EC/GDE
- 4:00pm **Yoga with Stephanie.** Call 717.964.1830 or email pachautauqua@gmail.com to receive the Zoom link. CHP

Thursday, July 9

- 10-4pm The Governor Dick Environmental Center open (tower and outside restrooms closed). EC/GDE

Friday, July 10

- 9am Mt. Gretna Bird Club; see previous Friday listing.
- 10am **TED Circle Talk:** *What Obligation Do Social Media Companies Have to the Greater Good?* Social media has become our new home. Can we build it better? Taking design cues from urban planners and social scientists, technologist Eli Pariser shows how the problems we're encountering on digital platforms aren't all that new -- and shares how, by following the model of thriving towns and cities, we can create trustworthy online communities. Call 717.964.1830 or email pachautauqua@gmail.com for a Zoom link. CHP

(Friday, July 10 - continued)

- 10-4pm The Governor Dick Environmental Center open (tower and outside restrooms closed). EC/GDE
- 7:30-10:30pm Mt. Gretna Roller Rink open. \$8 plus blade/skate rental
- 8:00pm **Gretna Theatre DriveIn at Soldier's Field:** 42nd Street. Purchase \$25 per car tickets in advance at <https://sforce.co/31GnbHk>. Refreshments available (but no restrooms). Movie starts at dusk.
- Dusk **Reels on Wheels: Raiders of the Lose Ark.** \$25 per vehicle. Advance online sales only at <http://www.parenfaire.com/reelsonwheels.html#about>

Saturday, July 11

- 9-12pm Volunteer Morning at Governor Dick. EC/GDE
- 10-4pm The Governor Dick Environmental Center open (tower and outside restrooms closed). EC/GDE
- 7:30-10:30pm Mt. Gretna Roller Rink open. \$8 plus blade/skate rental
- Dusk **Reels on Wheels: Raiders of the Lose Ark.** \$25 per vehicle. Advance online sales only at <http://www.parenfaire.com/reelsonwheels.html#about>

Sunday, July 12

- Worship (recorded) from Mt. Gretna United Methodist Church on their YouTubeChannel, Facebook page, or www.mtgretnachurch.org, available at 6am to be viewed at your convenience
- Worship online with Trinity Lutheran Church of Colebrook www.trinitylutherancolebrook.org or on their Facebook page; for pastoral needs, contact Pastor Cheri at 717.606.8851
- 8:00am **Fitness Hike:** move at a faster pace for 4-6 miles. Register by calling 717.964.3808 or email governordick@gmail.com
- 1-5pm The Governor Dick Environmental Center open (tower and outside restrooms closed). EC/GDE
- 1-2:30pm **Governor Dick Environmental Center Benefit Concert:** join us for music outdoors led by Patsy Kline, Music on the Porch coordinator, on mandolin and Sharon Barlet on fiddle. Attendance is by donation and benefits the Environmental Center. Social distancing will be recommended for this event. Bring a lawn chair. EC/GDE
- 7:30pm **Virtual Concert: Miranda Cuckson, Violin.** 45 minute performance, followed by a live chat. Connect via Gretna Music's Facebook page <https://www.facebook.com/GretnaMusic> or website <http://www.gretnamusic.org>. MAG

Current Mt. Gretna Business Hours:

(any changes in hours from previous week are capitalized/underlined)

- The Jigger Shop:** open for takeout and deck dining Wednesday-Sunday 12-8pm
- Kirsch Antiques** (at the former Gretna Emporium): open Wednesday-Sunday 11:30-8pm
- La Cigale/The Gallery at La Cigale:** open weekdays from 11-5pm; masks required
- MG Hideaway:** deck open from 11:30am-12 Midnight Friday/Saturday and SUNDAY FROM 11:30am-10pm; takeout from 12-8pm daily. www.mtgretnahideaway.com
- MG Lake & Beach:** open daily 11:30am-6pm; admission limited AND by advance purchase on website ONLY. <http://www.mtgretnalake.com>
- MG Miniature Golf:** open 2-9pm daily
- MG Pizzeria:** takeout window open Friday & Saturday 11am-8pm and Sunday 11am-6pm
- MG Roller Rink:** Friday/Saturday 7:30-10:30pm \$8; SATURDAY 1-3pm \$6; 1st/3rd Thursdays 6:30-8:30pm Family Night \$4; skate/blade rental additional
- Porch & Pantry Cafe:** open TUESDAY-SUNDAY 8am-1pm
- Timbers Restaurant:** open Friday/Saturday 5:30-9pm for outdoor dining with a limited menu

The following organizations have cancelled or changed their anticipated programming until further notice:

- Bible Festival at the Tabernacle:** season cancellation
- Gretna Music:** concerts through July postponed until 2021
- Gretna Theatre:** season cancellation
- MG Area Historical Society:** season cancellation
- MG Campmeeting:** season cancellation
- MG Community Library:** not open, but free materials are available on the porch
- MG Heritage Festival:** performances through July cancelled
- MG Summer Concerts at the Tabernacle:** season cancelled
- MG, the PA Chautauqua:** programs in the Hall of Philosophy cancelled; virtual programming as noted in the calendar
- Original Mt. Gretna Cicada Music Festival:** season cancelled

"This Week in Mt. Gretna" is produced by Lightkeeper Consulting (717.507.2667 or info@lightkeeper.net), in association with this publication's advertisers; also available by free subscription via email by request. Weekly advertising space is available. To alter/add your event to the schedule or advertise, please contact Kathy Snavey at Lightkeeper Consulting - 717.507.2667 or info@lightkeeper.net.

CG*Chautauqua grounds
 CP*Chautauqua playground
 EC*Governor Dick Environmental Ctr.
 FH*Mt. Gretna Fire Hall/parking lot

Program/Activity Location Codes (Two letters):

HC*Heights Community Building
 HP*Hall of Philosophy
 LB*Mt. Gretna Library
 MC*Methodist Church

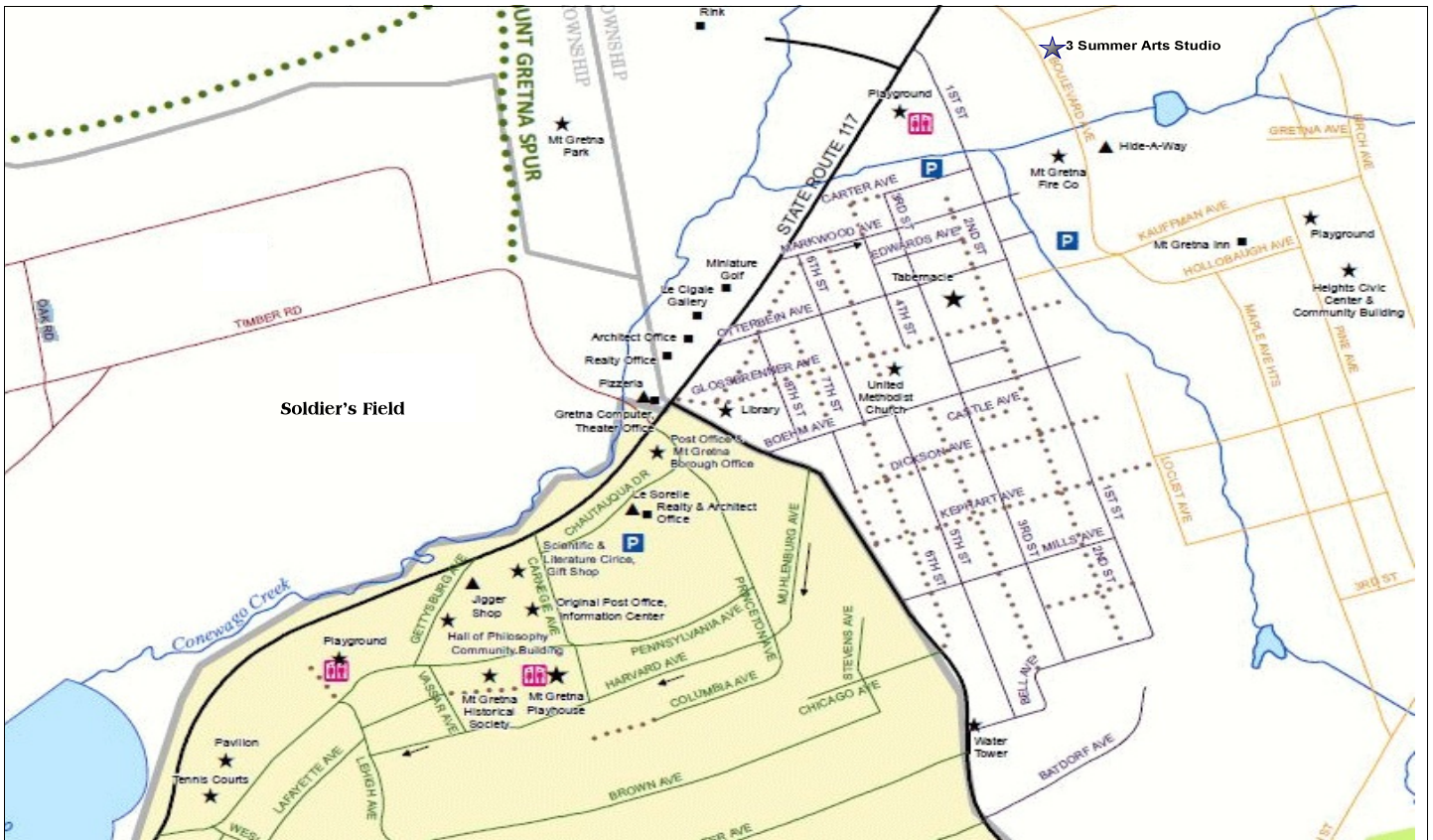
PH*Playhouse
 PL*Chautauqua parking lot
 TB*Campmeeting Tabernacle
 TC*Tennis Courts/Tennis Club Grounds

ACN * Mt. Gretna Arts Council
 BBF * Bible Festival/Summer at the Tabernacle
 CFN * Pennsylvania Chautauqua Foundation
 CHP * Chautauqua Summer Programs
 CIC * Original Mt. Gretna Cicada Festival
 CMP * Campmeeting Association

Sponsoring Organization Codes (Three letters):

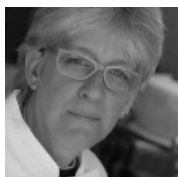
GDE * Governor Dick Environmental Center
 GLC * The Gallery at LaCigale
 GTH * Gretna Theatre
 HCA * Heights Community Association
 HER * Heritage Festival
 HIS * Mt. Gretna Area Historical Society

LIB * Mt. Gretna Community Library
 MAG * Music at Gretna
 OAS * Outdoor Art Show
 SOA * Mt. Gretna School of Art
 UMC * United Methodist Church
 VFC * Mt. Gretna Volunteer Fire Company



Map Notes: (Le Sorelle) on the map is now the Porch & Pantry Cafe; also in that building is Penn Realty and Mt. Gretna Realty, along with the Jonestown Bank & Trust's ATM on Chautauqua Drive; the Gift Shop is Kirsch's Antiques; the Timbers is located at the end of Timber Road; to get to the Lake, follow Timber Rd. and take the first left turn; the building marked Realty Office on Rt. 117 is currently available for lease. And Mrs. Hernley sells flowers across the street from La Cigale, on Fridays and Saturdays.

Chef on the Go



From Casual to Elegant Affairs
 Dinner Parties, Receptions,
 Special Occasions by
 Rebecca Bridoy
964-3541



3 Summer Arts Studio

**Day & Evening
 Art Classes**

For information on classes and to sign
 up please visit our website at
www.3SummerArts.com
 14 Park Ave.
 Mt. Gretna, PA 17064
 717.964-3530

Need Cash?

In Mount Gretna,
 an ATM is available at
Porch & Pantry
 on Chautauqua Drive.



Gretna Computer Consulting
 Hardware Service & Sales
 Software Support

9-5pm * Rt. 117 * Mt. Gretna
964-1106