

This Week in Mt. Gretna

Celebrating our 21st year of service to the Mt. Gretna Community ❖ Friday, July 31, 2020
The 128th Season ❖ Visitor Center open Wednesday-Sunday 11:30am-3:30pm

Friday, July 31

- 9am Mt. Gretna Bird Club; meet in the Chautauqua parking lot; no experience needed; bring your binoculars. PL
- 10:00am **The Eight Dimensions of Health: *The Financial Dimension***, with Janice Balmer. VI of VIII. Call 717.964.1830 or email pachautauqua@gmail.com to register and get Zoom link. CHP
- 10-4pm The Governor Dick Environmental Center open (tower and outside restrooms closed). EC/GDE
- 7:15pm **MGSOA Lecture: *Letters to John Berger***, with Amber Scoon. Call 717.964.1830 or email pachautauqua@gmail.com to register and get the Zoom link. CHP
- 7:30-10:30pm Mt. Gretna Roller Rink open. \$8 plus blade/skate rental
- Dusk **Reels on Wheels: *Lord of the Rings & Fellowship of the Ring***. \$25 per vehicle. Advance online sales only at <http://www.parenfaire.com/reelsonwheels.html#about>

Saturday, August 1

8:30-8:45am **The Jett Riders** bicycle through Mt. Gretna (coming from Cornwall) on Rt. 117; this team is raising money for Duchenne Muscular Dystrophy. Stand along Rt. 117 with some homemade signs to cheer on this amazing group of folks - and if you feel so inclined, give at <https://www.firstgiving.com/fundraiser/luke-hains/JettRide-2020>; the team includes Luke and Lance Hains of S. Lebanon Twp., raising funds on behalf of their brother, Levi! #Riding4Levi

- 10-4pm The Governor Dick Environmental Center open (tower and outside restrooms closed). EC/GDE
- 1:30-4pm MG Roller Rink open. \$6 plus blade/skate rental
- 7:30-10:30pm Mt. Gretna Roller Rink open. \$8 plus blade/skate rental
- Dusk **Reels on Wheels: *Lord of the Rings & Fellowship of the Ring***. \$25 per vehicle. Advance online sales only at <http://www.parenfaire.com/reelsonwheels.html#about>

Sunday, August 2

Worship (recorded) from Mt. Gretna United Methodist Church on their YouTubeChannel, Facebook page, or www.mtgretnachurch.org, available at 6am to be viewed at your convenience

Worship online with Trinity Lutheran Church of Colebrook www.trinitylutherancolebrook.org or on their Facebook page; for pastoral needs, contact Pastor Cheri at 717.606.8851

- 10:00am **Worship at the Tabernacle** with Pastor Mike Remel; masks required and social distancing. No greeters/ushers, physical contact, singing; bulletins, offering and attendance slip receptacles at rear entrance. Communion offered in sealed bags.
- 1-5pm The Governor Dick Environmental Center open (tower and outside restrooms closed). EC/GDE
- 1-4pm **Music on the Porch:** Our bluegrass music jam is back!! Bring a lawn chair and your stringed instrument to play along and have a great time. Come just to enjoy the music and dance in the grass! EC/GDE
- 1-4pm **MGSOA Student Art Show** via Zoom. Info at <http://www.mgsoa.org/calendar>
- 7:30pm **The Gryphon Trio's** Mt. Gretna performance from 2006 will be available online at <https://youtu.be/7IW7E4kartk>, followed by a conversation with pianist, Jamie Parker. MAG

Monday, August 3

- 7:15pm **MGSOA Lecture: *A Delicate Collision with Art & Science***, with Deidre Murphy. Call 717.964.1830 or email pachautauqua@gmail.com to register and get the Zoom link. CHP

Tuesday, August 4

- 10:00am **LVC Book Review:** Dannagal Goldthwaite Young's *Irony and Outrage: The Polarized Landscape of Rage, Fear, and Laughter in the United States*, with Diane Johnson. Call 717.964.1830 or email pachautauqua@gmail.com to register and get Zoom link. CHP

Wednesday, August 5

- 10-4pm The Governor Dick Environmental Center open (tower and outside restrooms closed). EC/GDE
- 10:00am **Art Education: *Charles Rennie Mackintosh and the Glasgow School of Art***, with Gloria Mast. I of III. Register by calling 717.964.1830 or emailing pachautauqua@gmail.com to get the Zoom link information.
- 4:00pm **Yoga with Stephanie.** Call 717.964.1830 or email pachautauqua@gmail.com to receive the Zoom link. CHP
- 7:15pm **MGSOA Lecture: *The Picture & the Muse***, with John David Wissler. Call 717.964.1830 or email pachautauqua@gmail.com to register and get the Zoom link. CHP

Thursday, August 6

- 10-4pm The Governor Dick Environmental Center open (tower and outside restrooms closed). EC/GDE
- 5:30-9pm **The Timbers is now open for dinner on Thursdays!**
- 6:30-8:30pm Family Night at the MG Roller Rink. \$4 plus skate/blade rental

Friday, August 7

- 9am Mt. Gretna Bird Club; meet in the Chautauqua parking lot; no experience needed; bring your binoculars. PL
- 10:00am **The Eight Dimensions of Health:** not meeting this week
- 10:00am **Great American Poets: *Robert Frost***, with Jesse Waters. Call 717.964.1830 or email pachautauqua@gmail.com to register and get Zoom link. CHP
- 10-4pm The Governor Dick Environmental Center open (tower and outside restrooms closed). EC/GDE
- 7:30-10:30pm Mt. Gretna Roller Rink open. \$8 plus blade/skate rental
- Dusk **Reels on Wheels: *Tommy Boy & Wayne's World***. \$25 per vehicle. Advance online sales only at <http://www.parenfaire.com/reelsonwheels.html#about>

Saturday, August 8

- 10-4pm The Governor Dick Environmental Center open (tower and outside restrooms closed). EC/GDE
- 1:30-4pm Mt. Gretna Roller rink open. \$6 plus blade/skate rental.
- 7:30-10:30pm Mt. Gretna Roller Rink open. \$8 plus blade/skate rental
- Dusk **Reels on Wheels: *Tommy Boy & Wayne's World***. \$25 per vehicle. Advance online sales only at <http://www.parenfaire.com/reelsonwheels.html#about>

Sunday, August 9

Worship (recorded) from Mt. Gretna United Methodist Church on their YouTubeChannel, Facebook page, or www.mtgretnachurch.org, available at 6am to be viewed at your convenience

Worship online with Trinity Lutheran Church of Colebrook www.trinitylutherancolebrook.org or on their Facebook page; for pastoral needs, contact Pastor Cheri at 717.606.8851

10:00am Worship at the Tabernacle with Pastor Mike Remel; masks required and social distancing. No greeters/ushers, physical contact, singing; bulletins, offering and attendance slip receptacles at rear entrance. Communion offered in sealed bags.

- 1-5pm The Governor Dick Environmental Center open (tower and outside restrooms closed). EC/GDE

Mt. Gretna Business Hours:

(any changes in hours from previous week are capitalized/ underlined)

- The Jigger Shop:** open for takeout and deck dining Wednesday-Sunday 12-8pm
- Kirsch Antiques** (at the former Gretna Emporium): open Wednesday-Sunday 11:30-8pm
- La Cigale/The Gallery at La Cigale:** open weekdays from 11-5pm; masks required
- MG Hideaway:** deck open from 11:30am-12 Midnight Friday/Saturday and Sunday from 11:30am-10pm; takeout from 12-8pm daily. www.mtgretnahideaway.com
- MG Lake & Beach:** open daily 11:30am-6pm; admission limited AND by advance purchase on website ONLY. <http://www.mtgretnalake.com>
- MG Miniature Golf:** open 2-9pm daily
- MG Pizzeria:** takeout window open Thursday - Sunday, 8am-8pm
- MG Roller Rink:** Friday/Saturday 7:30-10:30pm \$8; Saturday, 1:30-4pm \$6; 1st/3rd Thursdays, 6:30-8:30pm Family Night \$4; skate/blade rental additional

- Porch & Pantry Cafe:** open Tuesday-Sunday, 8am-1pm
- Timbers Restaurant:** open THURSDAY/Friday/Saturday 5:30-9pm for outdoor dining with a limited menu

The following organizations have cancelled or changed their anticipated programming until further notice:

- Bible Festival at the Tabernacle:** season cancellation
- Gretna Music:** concerts through early August postponed until 2021
- Gretna Theatre:** season cancellation
- MG Area Historical Society:** season cancellation
- MG Campmeeting:** season cancellation
- MG Community Library:** not open, but free materials are available on the porch
- MG Heritage Festival:** season cancelled
- MG Summer Concerts at the Tabernacle:** season cancelled
- MG, the PA Chautauqua:** programs in the Hall of Philosophy cancelled; virtual programming as noted in the calendar
- Original Mt. Gretna Cicada Music Festival:** season cancelled

"This Week in Mt. Gretna" is produced by Lightkeeper Consulting (717.507.2667 or info@lightkeeper.net), in association with this publication's advertisers; also available by free subscription via email by request. Weekly advertising space is available. To alter/add your event to the schedule or advertise, please contact Kathy Snively at Lightkeeper Consulting - 717.507.2667 or info@lightkeeper.net.

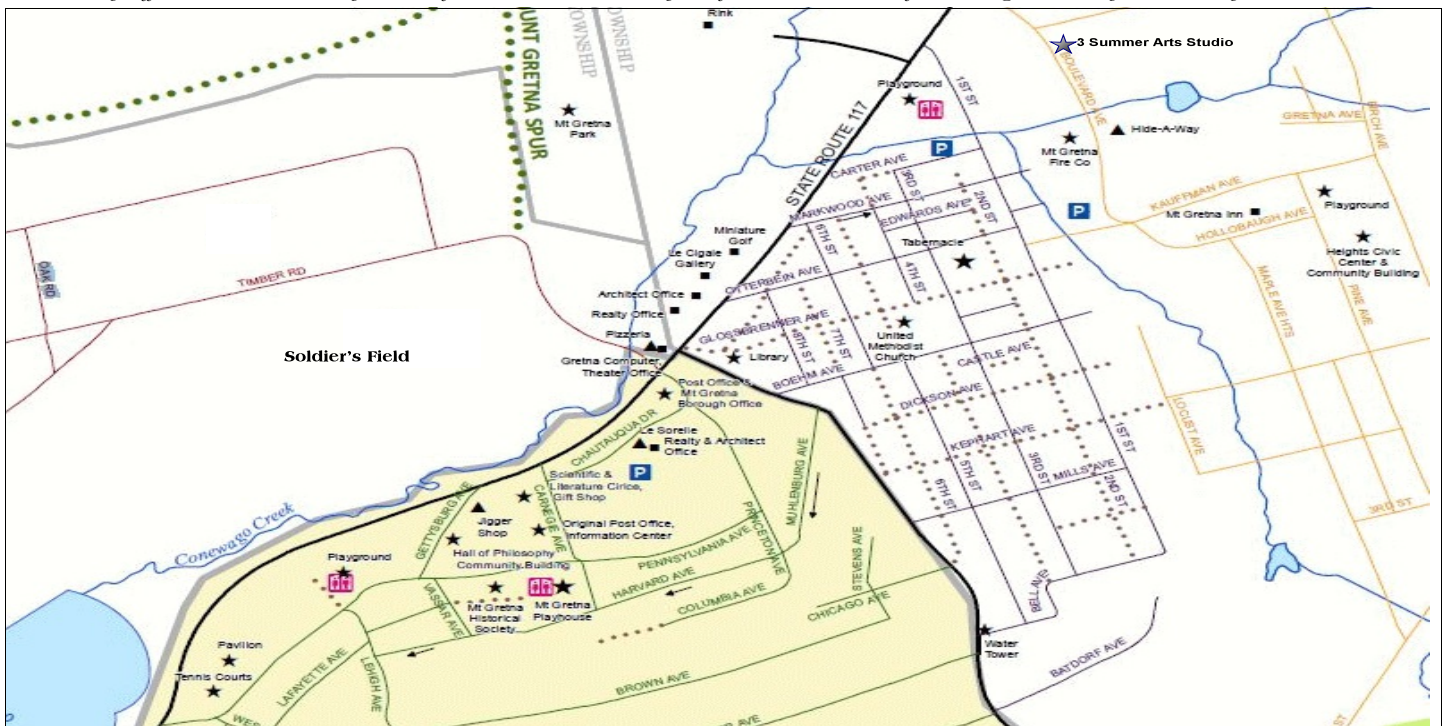
Program/Activity Location Codes (Two letters):

- | | | |
|-------------------------------------|-------------------------------|--------------------------------------|
| CG*Chautauqua grounds | HC*Heights Community Building | PH*Playhouse |
| CP*Chautauqua playground | HP*Hall of Philosophy | PL*Chautauqua parking lot |
| EC*Governor Dick Environmental Ctr. | LB*Mt. Gretna Library | TB*Campmeeting Tabernacle |
| FH*Mt. Gretna Fire Hall/parking lot | MC*Methodist Church | TC*Tennis Courts/Tennis Club Grounds |

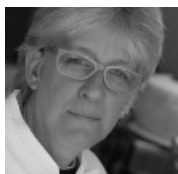
Sponsoring Organization Codes (Three letters):

- | | | |
|---|--|---|
| ACN * Mt. Gretna Arts Council | GDE * Governor Dick Environmental Center | LIB * Mt. Gretna Community Library |
| BBF * Bible Festival/Summer at the Tabernacle | GLC * The Gallery at LaCigale | MAG * Music at Gretna |
| CFN * Pennsylvania Chautauqua Foundation | GTH * Gretna Theatre | OAS * Outdoor Art Show |
| CHP * Chautauqua Summer Programs | HCA * Heights Community Association | SOA * Mt. Gretna School of Art |
| CIC * Original Mt. Gretna Cicada Festival | HER * Heritage Festival | UMC * United Methodist Church |
| CMP * Campmeeting Association | HIS * Mt. Gretna Area Historical Society | VFC * Mt. Gretna Volunteer Fire Company |

Map Notes: (Le Sorelle) on the map is now the Porch & Pantry Cafe; also in that building is Penn Realty and Mt. Gretna Realty, along with the Jonestown Bank & Trust's ATM on Chautauqua Drive; the Gift Shop is Kirsch's Antiques; the Timbers is located at the end of Timber Road; to get to the Lake, follow Timber Rd. and take the first left turn; the building marked Realty Office on Rt. 117 is currently available for lease. And Mrs. Hernley sells flowers across the street from La Cigale, on Fridays and Saturdays.



Chef on the Go



From Casual to Elegant Affairs
Dinner Parties, Receptions,
Special Occasions by
Rebecca Briody
964-3541



3 Summer Arts Studio

**Day & Evening
Art Classes**

For information on classes and to sign
up please visit our website at
www.3SummerArts.com
14 Park Ave.
Mt. Gretna, PA 17064
717.964-3330

Need Cash?

In Mount Gretna,
an ATM is available at
Porch & Pantry
on Chautauqua Drive.



Member
FDIC



Gretna Computer Consulting
Hardware Service & Sales
Software Support

9-5pm * Rt. 117 * Mt. Gretna
964-1106