

This Week in Mt. Gretna

Celebrating our 21st year of service to the Mt. Gretna Community ❖ Friday, August 7, 2020
The 128th Season ❖ Visitor Center open Wednesday-Sunday 11:30am-3:30pm

Friday, August 7

- 9am Mt. Gretna Bird Club; meet in the Chautauqua parking lot; no experience needed; bring your binoculars. PL
- 10:00am **The Eight Dimensions of Health:** not meeting this week
- 10:00am **Great American Poets:** *Robert Frost*, with Jesse Waters. Call 717.964.1830 or email pachautauqua@gmail.com to register and get Zoom link. CHP
- 10-4pm The Governor Dick Environmental Center open (tower and outside restrooms closed). EC/GDE
- 6-9pm **First Friday at the Timbers**, featuring art by Bob Heilman and Jeff White, as well as music by the Ken Gehret Trio (outdoors and under roof). No cover charge. Reservations requested by calling 717.964.3601.
- 7:30-10:30pm Mt. Gretna Roller Rink open. \$8 plus blade/skate rental
- Dusk **Reels on Wheels:** *Tommy Boy & Wayne's World*. \$25 per vehicle. Advance online sales only at <http://www.parenfaire.com/reelsonwheels.html#about>

Saturday, August 8

- 10-4pm The Governor Dick Environmental Center open (tower and outside restrooms closed). EC/GDE
- 1:30-4pm Mt. Gretna Roller rink open. \$6 plus blade/skate rental
- 7:00pm **Claudia Eliaza Zanes & Dan Zanes**, Gretna Music for Kids' first performers, are offering what may be the first of a series, **Social Isolation-All Ages Concert**. See Claudia Eliaza Zanes Facebook page for sign up information.
- 7:30-10:30pm Mt. Gretna Roller Rink open. \$8 plus blade/skate rental
- Dusk **Reels on Wheels:** *Tommy Boy & Wayne's World*. \$25 per vehicle. Advance online sales only at <http://www.parenfaire.com/reelsonwheels.html#about>

Sunday, August 9

- Worship (recorded) from Mt. Gretna United Methodist Church on their YouTubeChannel, Facebook page, or www.mtgretnachurch.org, available at 6am to be viewed at your convenience
- Worship online with Trinity Lutheran Church of Colebrook www.trinitylutherancolebrook.org or on their Facebook page; for pastoral needs, contact Pastor Cheri at 717.606.8851
- 10:00am Worship at the Tabernacle with Pastor Mike Remel; masks required and social distancing. No greeters/ushers, physical contact, singing; bulletins, offering and attendance slip receptacles at rear entrance. Communion offered in sealed bags.
- 1-5pm The Governor Dick Environmental Center open (tower and outside restrooms closed). EC/GDE

Tuesday, August 11

- 10:00am **LVC Book Review:** Catherine Malabou's *Morphing Intelligence: From IQ Measurement to Artificial Brains*, with Jeff Robbins. Call 717.964.1830 or email pachautauqua@gmail.com to register and get Zoom link. CHP

Wednesday, August 12

- 10-4pm The Governor Dick Environmental Center open (tower and outside restrooms closed). EC/GDE
- 10:00am **Art Education:** *Japanese Prints in the Reading Museum Collection*, with Gloria Mast. Call 717.964.1830 or email pachautauqua@gmail.com to receive the Zoom link. CHP
- 4:00pm **Yoga with Stephanie**. Call 717.964.1830 or email pachautauqua@gmail.com to receive the Zoom link. CHP

Thursday, August 13

- 10-4pm The Governor Dick Environmental Center open (tower and outside restrooms closed). EC/GDE

Friday, August 14

- 9am Mt. Gretna Bird Club; meet in the Chautauqua parking lot; no experience needed; bring your binoculars. PL

(Friday, August 14 - continued)

- 10:00am **The Eight Dimensions of Health:** *The Occupational Dimension*, with Janice Balmer. VI of VIII. Call 717.964.1830 or email pachautauqua@gmail.com to register and get Zoom link. CHP
- 10-4pm The Governor Dick Environmental Center open (tower and outside restrooms closed). EC/GDE
- 7:30-10:30pm Mt. Gretna Roller Rink open. \$8 plus blade/skate rental
- Dusk **Reels on Wheels:** *Creature from the Black Lagoon* AND *Alfred Hitchcock's The Birds*. \$25 per vehicle. Advance online sales only at <http://www.parenfaire.com/reelsonwheels.html#about>

Saturday, August 15

- 10-4pm The Governor Dick Environmental Center open (tower and outside restrooms closed). EC/GDE
- 1:30-4pm MG Roller Rink open. \$6 plus blade/skate rental
- 7:30-10:30pm Mt. Gretna Roller Rink open. \$8 plus blade/skate rental
- Dusk **Reels on Wheels:** *Creature from the Black Lagoon* AND *Alfred Hitchcock's The Birds*. \$25 per vehicle. Advance online sales only at <http://www.parenfaire.com/reelsonwheels.html#about>

Sunday, August 16

- Worship (recorded) from Mt. Gretna United Methodist Church on their YouTubeChannel, Facebook page, or www.mtgretnachurch.org, available at 6am to be viewed at your convenience
- Worship online with Trinity Lutheran Church of Colebrook www.trinitylutherancolebrook.org or on their Facebook page; for pastoral needs, contact Pastor Cheri at 717.606.8851
- 8:00am **Fitness Hike:** Come out for a faster paced hike of 4 to 6 miles and do your body and spirit a favor! Bring water and wear good hiking shoes. Please register by calling 717.964.3808 or emailing governordick@hotmail.com. EC/GDE
- 10:00am **Worship at the Tabernacle** with Pastor Mike Remel; masks required and social distancing. No greeters/ushers, physical contact, singing; bulletins, offering and attendance slip receptacles at rear entrance. Communion offered in sealed bags.
- 1-5pm The Governor Dick Environmental Center open (tower and outside restrooms closed). EC/GDE

NEW FROM THE GOVERNOR DICK ENVIRONMENTAL CENTER: GET OUTDOORS (GO) LEBANON! SUMMER READING PROGRAM

This program encourages Lebanon County children and families to read and be physically active in the summer months. We are proud to "host a post" for families to find and where your children will collect a rubbing of a special picture. All GO Lebanon! children who find and log at least 3 different rubbings will receive a reward. Find and collect more and be eligible to win a grand prize! You can pick up "Your Storybook 2020" at the office at the Governor Dick Environmental Center as well as the rubbing sheet. Get Outdoors, families, and have fun! Running now through August 30. ED/GDE

MT. GRETNA SCHOOL OF ART STUDENT WORKS FOR SALE

View them at <http://www.mgsoa.org/student-show-2020>
The school session runs through August 15.

Mt. Gretna Business Hours:

(any changes in hours from previous week are capitalized/ underlined)

- The Jigger Shop:** open for takeout and deck dining Wednesday-Sunday 12-8pm
- Kirsch Antiques** (at the former Gretna Emporium): open Wednesday-Sunday 11:30-8pm
- La Cigale/The Gallery at La Cigale:** open weekdays from 11-5pm; masks required
- MG Hideaway:** deck open from 11:30am-12 Midnight Friday/Saturday and Sunday from 11:30am-10pm; takeout from 12-8pm daily. www.mtgretnahideaway.com
- MG Lake & Beach:** open daily 11:30am-6pm; admission limited AND by advance purchase on website ONLY. <http://www.mtgretnalake.com>
- MG Miniature Golf:** open 2-9pm daily
- MG Pizzeria:** takeout window open Thursday - Sunday, 8am-8pm
- MG Roller Rink:** Friday/Saturday 7:30-10:30pm \$8; Saturday, 1:30-4pm \$6; 1st/3rd Thursdays, 6:30-8:30pm Family Night \$4; skate/blade rental additional

- Porch & Pantry Cafe:** open Tuesday-Sunday, 8am-1pm
- Timbers Restaurant:** open Thursday/Friday/Saturday 5:30-9pm for outdoor dining with a limited menu

The following organizations have cancelled or changed their anticipated programming until further notice:

- Bible Festival at the Tabernacle:** season cancellation
- Gretna Music:** concerts through early August postponed until 2021
- Gretna Theatre:** season cancellation
- MG Area Historical Society:** season cancellation
- MG Campmeeting:** season cancellation
- MG Community Library:** not open, but free materials are available on the porch
- MG Heritage Festival:** season cancelled
- MG Summer Concerts at the Tabernacle:** season cancelled
- MG, the PA Chautauqua:** programs in the Hall of Philosophy cancelled; virtual programming as noted in the calendar
- Original Mt. Gretna Cicada Music Festival:** season cancelled

"This Week in Mt. Gretna" is produced by Lightkeeper Consulting (717.507.2667 or info@lightkeeper.net), in association with this publication's advertisers; also available by free subscription via email by request. Weekly advertising space is available. To alter/add your event to the schedule or advertise, please contact Kathy Snively at Lightkeeper Consulting - 717.507.2667 or info@lightkeeper.net.

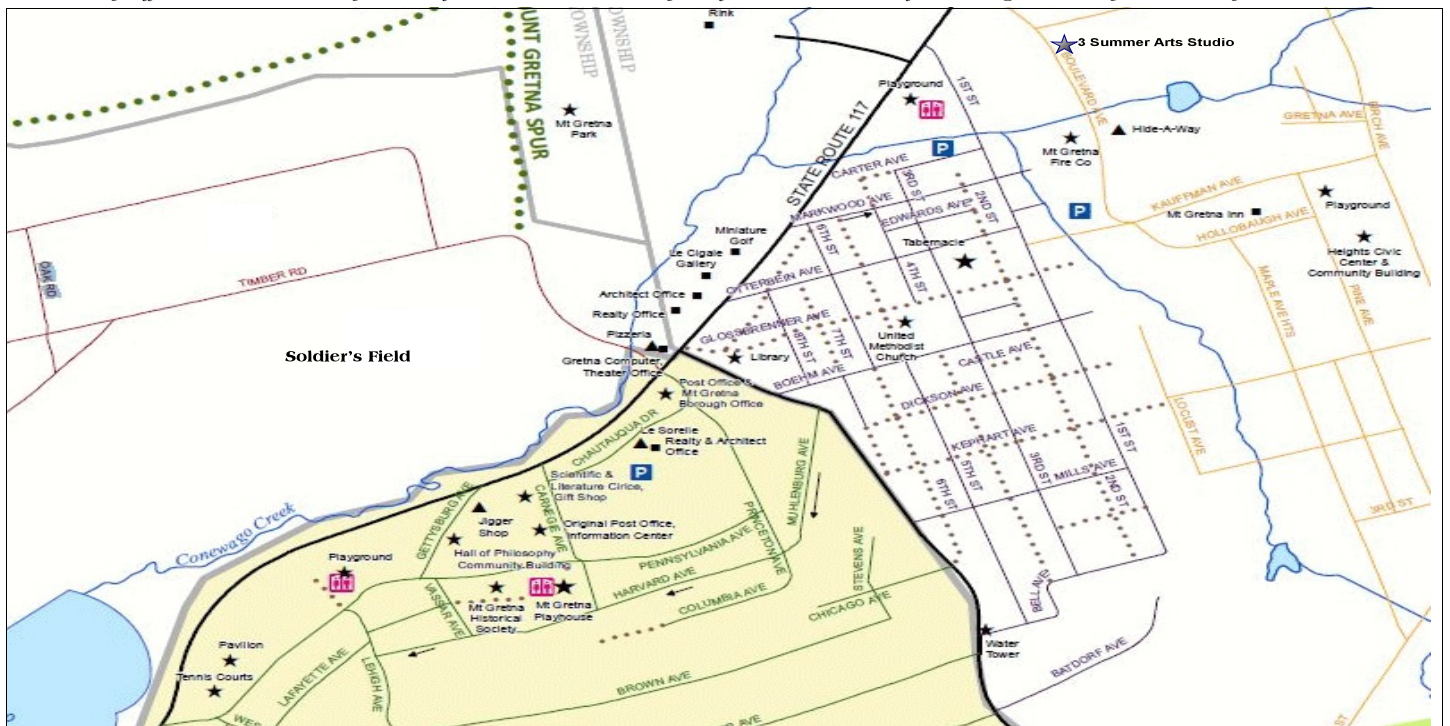
Program/Activity Location Codes (Two letters):

- | | | |
|-------------------------------------|-------------------------------|--------------------------------------|
| CG*Chautauqua grounds | HC*Heights Community Building | PH*Playhouse |
| CP*Chautauqua playground | HP*Hall of Philosophy | PL*Chautauqua parking lot |
| EC*Governor Dick Environmental Ctr. | LB*Mt. Gretna Library | TB*Campmeeting Tabernacle |
| FH*Mt. Gretna Fire Hall/parking lot | MC*Methodist Church | TC*Tennis Courts/Tennis Club Grounds |

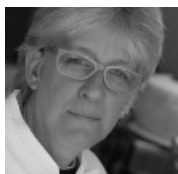
Sponsoring Organization Codes (Three letters):

- | | | |
|---|--|---|
| ACN * Mt. Gretna Arts Council | GDE * Governor Dick Environmental Center | LIB * Mt. Gretna Community Library |
| BBF * Bible Festival/Summer at the Tabernacle | GLC * The Gallery at LaCigale | MAG * Music at Gretna |
| CFN * Pennsylvania Chautauqua Foundation | GTH * Gretna Theatre | OAS * Outdoor Art Show |
| CHP * Chautauqua Summer Programs | HCA * Heights Community Association | SOA * Mt. Gretna School of Art |
| CIC * Original Mt. Gretna Cicada Festival | HER * Heritage Festival | UMC * United Methodist Church |
| CMP * Campmeeting Association | HIS * Mt. Gretna Area Historical Society | VFC * Mt. Gretna Volunteer Fire Company |

Map Notes: (Le Sorelle) on the map is now the Porch & Pantry Cafe; also in that building is Penn Realty and Mt. Gretna Realty, along with the Jonestown Bank & Trust's ATM on Chautauqua Drive; the Gift Shop is Kirsch's Antiques; the Timbers is located at the end of Timber Road; to get to the Lake, follow Timber Rd. and take the first left turn; the building marked Realty Office on Rt. 117 is currently available for lease. And Mrs. Hernley sells flowers across the street from La Cigale, on Fridays and Saturdays.



Chef on the Go



From Casual to Elegant Affairs
Dinner Parties, Receptions,
Special Occasions by
Rebecca Briody
964-3541



3 Summer Arts Studio

**Day & Evening
Art Classes**

For information on classes and to sign
up please visit our website at
www.3SummerArts.com
14 Park Ave.
Mt. Gretna, PA 17064
717.964-3330

Need Cash?

In Mount Gretna,
an ATM is available at
Porch & Pantry
on Chautauqua Drive.



Member
FDIC



Gretna Computer Consulting
Hardware Service & Sales
Software Support

9-5pm * Rt. 117 * Mt. Gretna
964-1106