



This Week in Mt. Gretna



Celebrating our 21st year of service to the Mt. Gretna Community ❖ Friday, August 14, 2020
The 128th Season ❖ Visitor Center open Wednesday-Sunday 11:30am-3:30pm through August 24

Friday, August 14

- 9am Mt. Gretna Bird Club; meet in the Chautauqua parking lot; no experience needed; bring your binoculars. PL
- 10:00am **The Eight Dimensions of Health: *The Occupational Dimension***, with Janice Balmer. VI of VIII. Call 717.964.1830 or email pachautauqua@gmail.com to register and get Zoom link. CHP
- 10-4pm The Governor Dick Environmental Center open (tower and outside restrooms closed). EC/GDE
- 7:30-10:30pm Mt. Gretna Roller Rink open. \$8 plus blade/skate rental
- Dusk **Reels on Wheels: *Creature from the Black Lagoon* AND *Alfred Hitchcock's The Birds***. \$25 per vehicle. Advance online sales only at <http://www.parenfaire.com/reelsonwheels.html#about>

Saturday, August 15

- 10-4pm The Governor Dick Environmental Center open (tower and outside restrooms closed). EC/GDE
- 1:30-4pm MG Roller Rink open. \$6 plus blade/skate rental
- 7:30-10:30pm Mt. Gretna Roller Rink open. \$8 plus blade/skate rental
- Dusk **Reels on Wheels: *Creature from the Black Lagoon* AND *Alfred Hitchcock's The Birds***. \$25 per vehicle. Advance online sales only at <http://www.parenfaire.com/reelsonwheels.html#about>

Sunday, August 16

- Worship (recorded) from Mt. Gretna United Methodist Church on their YouTubeChannel, Facebook page, or www.mtgretnachurch.org, available at 6am to be viewed at your convenience
- Worship online with Trinity Lutheran Church of Colebrook www.trinitylutherancolebrook.org or on their Facebook page; for pastoral needs, contact Pastor Cheri at 717.606.8851
- 8:00am **Fitness Hike:** Come out for a faster paced hike of 4 to 6 miles and do your body and spirit a favor! Bring water and wear good hiking shoes. Please register by calling 717.964.3808 or emailing governordick@hotmail.com. EC/GDE
- 10:00am **Worship at the Tabernacle** with Pastor Mike Remel; masks required and social distancing. No greeters/ushers, physical contact, singing; bulletins, offering and attendance slip receptacles at rear entrance. Communion offered in sealed bags.
- 1:00pm The Annual Stockholder Meeting of the PA Chautauqua via Zoom.
- 1-5pm The Governor Dick Environmental Center open (tower and outside restrooms closed). EC/GDE

Wednesday, August 19

- 10-4pm The Governor Dick Environmental Center open (tower and outside restrooms closed). EC/GDE
- 10:00am **Art Education:** Françoise Gilot prints in the Berman Museum's Collection at Ursinus College, with Gloria Mast. Call 717.964.1830 or email pachautauqua@gmail.com to receive the Zoom link. Final in series. CHP
- 4:00pm **Yoga with Stephanie.** Call 717.964.1830 or email pachautauqua@gmail.com to receive the Zoom link. CHP

Thursday, August 20

- 10-4pm The Governor Dick Environmental Center open (tower and outside restrooms closed). EC/GDE
- 10:00am **Religious Discussion Series: *Old Christianity for a New Age: Recovering the Faith of Jesus***, with Dr. Darrell Woomer. Call 717.964.1830 or email pachautauqua@gmail.com to receive the Zoom link. Final in series. CHP
- 6:30-8:30pm Family Night at the MG Roller Rink. \$4 plus skate/blade rental

Friday, August 21

- 9am Mt. Gretna Bird Club; meet in the Chautauqua parking lot; no experience needed; bring your binoculars. PL

(Friday, August 21 - continued)

- 10:00am **The Eight Dimensions of Health: *The Social Dimension***, with Janice Balmer. VII of VIII. Call 717.964.1830 or email pachautauqua@gmail.com to register and get Zoom link. CHP
- 10-4pm The Governor Dick Environmental Center open (tower and outside restrooms closed). EC/GDE
- 7:00pm **Toys with PA Roots**, with Susan Asbury. Call 717.964.1830 or email pachautauqua@gmail.com for the Zoom link. CHP
- 7:30-10:30pm Mt. Gretna Roller Rink open. \$8 plus blade/skate rental
- Dusk **Reels on Wheels: *Grease***. \$25 per vehicle. Advance online sales only at <http://www.parenfaire.com/reelsonwheels.html#about>

Saturday, August 22

- 10-4pm The Governor Dick Environmental Center open (tower and outside restrooms closed). EC/GDE
- 11:00am **Master Storyteller Charlotte Blake Alston** will be telling traditional and contemporary stories enhanced by traditional African instruments at the Governor Dick Environmental Center. Attendance is by donation; limited to the first 50 who register by emailing mikacook@gretnamusic.org. EC/MAG
- 1:30-4pm Mt. Gretna Roller rink open. \$6 plus blade/skate rental
- 2:00pm **Insect Safari:** A hunting we will go! Go buggy with this search for insects in the meadow and in the forest. We'll learn what they eat, how they hunt if they are predators, and what happens when winter arrives. Fun for the whole family! Call 717.964.3808 or email governordick@hotmail.com to register. EC/GDE
- 7:30-10:30pm Mt. Gretna Roller Rink open. \$8 plus blade/skate rental
- Dusk **Reels on Wheels: *Grease***. \$25 per vehicle. Advance online sales only at <http://www.parenfaire.com/reelsonwheels.html#about>

Sunday, August 23

- Worship (recorded) from Mt. Gretna United Methodist Church on their YouTubeChannel, Facebook page, or www.mtgretnachurch.org, available at 6am to be viewed at your convenience
- Worship online with Trinity Lutheran Church of Colebrook www.trinitylutherancolebrook.org or on their Facebook page; for pastoral needs, contact Pastor Cheri at 717.606.8851
- 10:00am **Worship at the Tabernacle** with Pastor Mike Remel; masks required and social distancing. No greeters/ushers, physical contact, singing; bulletins, offering and attendance slip receptacles at rear entrance. Communion offered in sealed bags.
- 1-5pm The Governor Dick Environmental Center open (tower and outside restrooms closed). EC/GDE
- 1:30pm **Golden Eagle Hikers:** join other hikers over the age of 50 for an easy-paced hike of 2 to 3 miles. The trails are rocky and hilly so wear sturdy shoes and bring water. Register by calling 717.964.3808 or emailing governordick@hotmail.com. EC/GDE

Sunday, August 30 at 5:30pm

Gretna Music presents a Live Chamber Performance with the Morales Duo

outside at the Governor Dick/Clarence Schock Environmental Center

- Bela Bartok's Hungarian Folk Melodies for Violin & Cello
- Fritz Kreisler's Recitative & Scherzo for solo Violin
- Johann Sebastian Bach's Suite No. 1 for solo Cello
- Zoltan Kodaly's Duo for Violin & Cello

Register by emailing mikacook@gretnamusic.org



Mt. Gretna Business Hours:

(any changes in hours from previous week are capitalized/ underlined)

- The Jigger Shop:** open for takeout and deck dining Wednesday-Sunday 12-8pm
- Kirsch Antiques** (at the former Gretna Emporium): open Wednesday-Sunday 11:30-8pm
- La Cigale/The Gallery at La Cigale:** open weekdays from 11-5pm; masks required
- MG Hideaway:** deck open from 11:30am-12 Midnight Friday/Saturday and Sunday from 11:30am-10pm; takeout from 12-8pm daily. www.mtgretnahideaway.com
- MG Lake & Beach:** open daily 11:30am-6pm; admission limited AND by advance purchase on website ONLY. <http://www.mtgretnalake.com>
- MG Miniature Golf:** open 2-9pm daily
- MG Pizzeria:** takeout window open Thursday - Sunday, 8am-8pm
- MG Roller Rink:** Friday/Saturday 7:30-10:30pm \$8; Saturday, 1:30-4pm \$6; 1st/3rd Thursdays, 6:30-8:30pm Family Night \$4; skate/blade rental additional

- Porch & Pantry Cafe:** open Tuesday-Sunday, 8am-1pm
- Timbers Restaurant:** open Thursday/Friday/Saturday 5:30-9pm for outdoor dining with a limited menu

The following organizations have cancelled or changed their anticipated programming until further notice:

- Bible Festival at the Tabernacle:** season cancellation
- Gretna Music:** concerts through early August postponed until 2021
- Gretna Theatre:** season cancellation
- MG Area Historical Society:** season cancellation
- MG Campmeeting:** season cancellation
- MG Community Library:** not open, but free materials are available on the porch
- MG Heritage Festival:** season cancelled
- MG Summer Concerts at the Tabernacle:** season cancelled
- MG, the PA Chautauqua:** programs in the Hall of Philosophy cancelled; virtual programming as noted in the calendar
- Original Mt. Gretna Cicada Music Festival:** season cancelled

"This Week in Mt. Gretna" is produced by Lightkeeper Consulting (717.507.2667 or info@lightkeeper.net), in association with this publication's advertisers; also available by free subscription via email by request. Weekly advertising space is available. To alter/add your event to the schedule or advertise, please contact Kathy Snively at Lightkeeper Consulting - 717.507.2667 or info@lightkeeper.net.

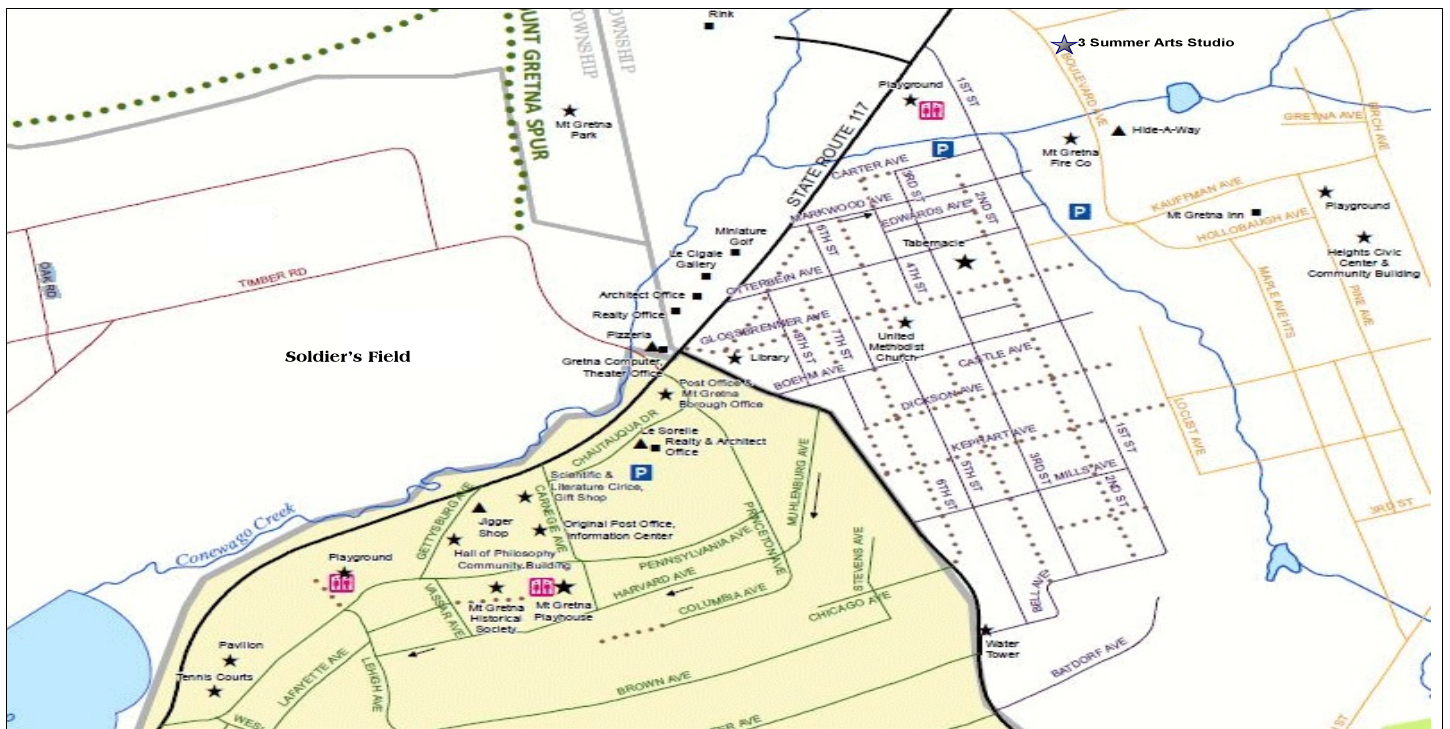
Program/Activity Location Codes (Two letters):

- | | | |
|-------------------------------------|-------------------------------|--------------------------------------|
| CG*Chautauqua grounds | HC*Heights Community Building | PH*Playhouse |
| CP*Chautauqua playground | HP*Hall of Philosophy | PL*Chautauqua parking lot |
| EC*Governor Dick Environmental Ctr. | LB*Mt. Gretna Library | TB*Campmeeting Tabernacle |
| FH*Mt. Gretna Fire Hall/parking lot | MC*Methodist Church | TC*Tennis Courts/Tennis Club Grounds |

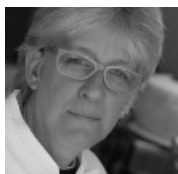
Sponsoring Organization Codes (Three letters):

- | | | |
|---|--|---|
| ACN * Mt. Gretna Arts Council | GDE * Governor Dick Environmental Center | LIB * Mt. Gretna Community Library |
| BBF * Bible Festival/Summer at the Tabernacle | GLC * The Gallery at LaCigale | MAG * Music at Gretna |
| CFN * Pennsylvania Chautauqua Foundation | GTH * Gretna Theatre | OAS * Outdoor Art Show |
| CHP * Chautauqua Summer Programs | HCA * Heights Community Association | SOA * Mt. Gretna School of Art |
| CIC * Original Mt. Gretna Cicada Festival | HER * Heritage Festival | UMC * United Methodist Church |
| CMP * Campmeeting Association | HIS * Mt. Gretna Area Historical Society | VFC * Mt. Gretna Volunteer Fire Company |

Map Notes: (Le Sorelle) on the map is now the Porch & Pantry Cafe; also in that building is Penn Realty and Mt. Gretna Realty, along with the Jonestown Bank & Trust's ATM on Chautauqua Drive; the Gift Shop is Kirsch's Antiques; the Timbers is located at the end of Timber Road; to get to the Lake, follow Timber Rd. and take the first left turn; the building marked Realty Office on Rt. 117 is currently available for lease. And Mrs. Hernley sells flowers across the street from La Cigale, on Fridays and Saturdays.



Chef on the Go



From Casual to Elegant Affairs
Dinner Parties, Receptions,
Special Occasions by
Rebecca Briody
964-3541



3 Summer Arts Studio

Day & Evening Art Classes

For information on classes and to sign up please visit our website at www.3SummerArts.com
14 Park Ave.
Mt. Gretna, PA 17064
717.964-3330

Need Cash?

In Mount Gretna, an ATM is available at Porch & Pantry on Chautauqua Drive.



Member FDIC



Gretna Computer Consulting
Hardware Service & Sales
Software Support

9-5pm * Rt. 117 * Mt. Gretna
964-1106